

## Overview

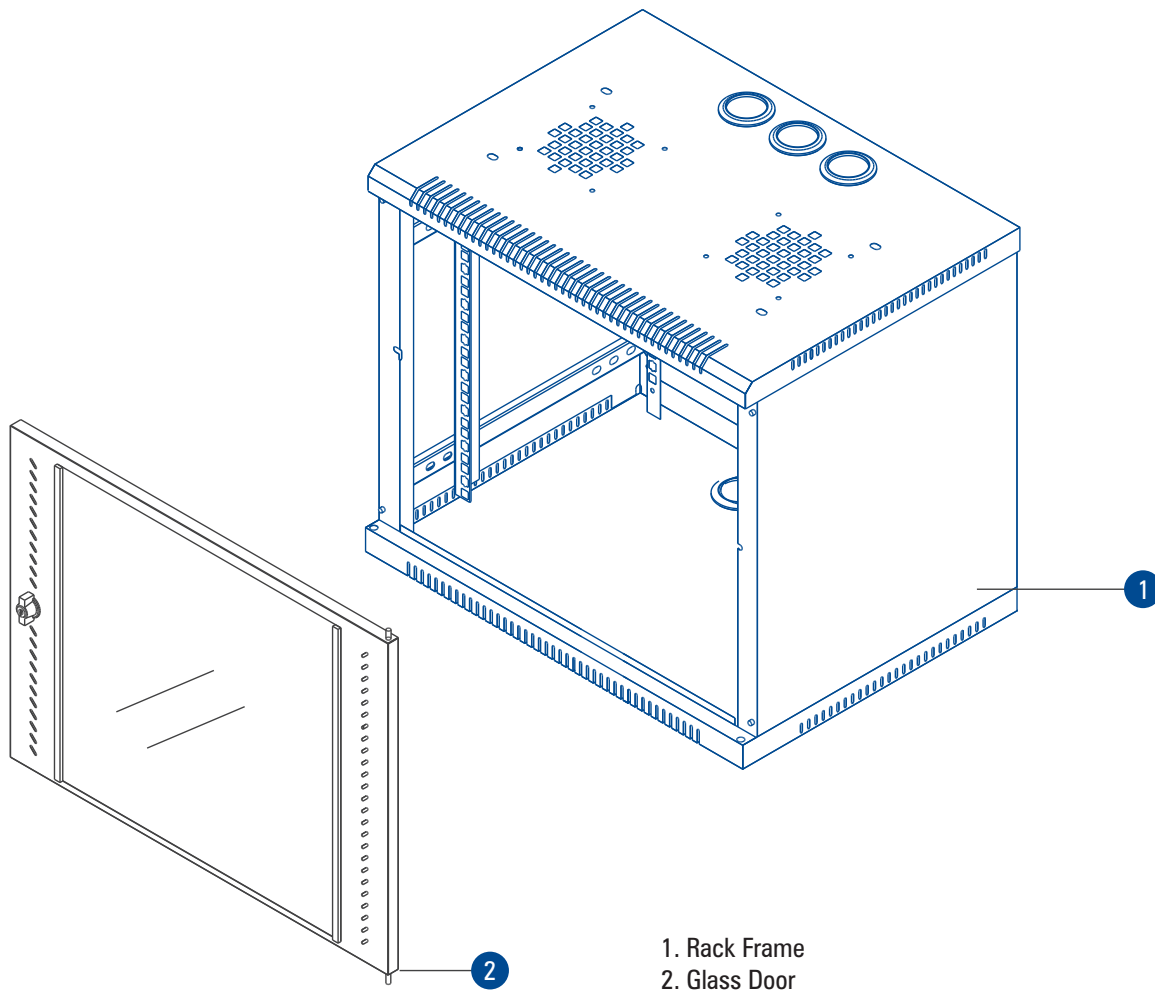
WM Series, General Electronics Racks for Small Networking, AV, Telecom & Lab application. Racks are manufactured out of steel sheet punched, formed, welded and powder coated with highest quality standards under stringent ISO 9001-2008 Manufacturing & Quality management system to ensure highest quality product.

Standard for Racks configuration will be welded frame integrated with side panel / removable side panel is available and vented top cover with fan mounting provision, associated Front Glass Door with Lock & Key and provision to mount racks on wall.



Available in 4RU~15RU Variants with 400, 500, 550 & 600 Depth configurations and 550 Width configurations.

## Single Section Wall Mount Configurator Drawing with Critical Parts



### Features

- Conforms to DIN 41494 or Equivalent EIA /ISO / EN / CEA Standard
- Adjustable mounting depth
- 2 No Adjustable, 19" verticals with Punched 10 mm Square Hole and Universal 12.7mm-15.875mm-15.875mm alternating hole pattern offers greater mounting flexibility, maximizes usable mounting space.
- State-of-the-art manufacturing methods provide the best product quality and fastest delivery in the industry
- 100% assured compatibility with all equipments conforming to DIN 41494 (General industrial standard for equipments)
- Powder coated finish with seven tank pretreatment process meeting ASTM standard
- Grounding & Bonding Options
- 1 or 2 Fan Mount provision on top cover

### Accessories:

- Cable Organisers
- Power Distribution Units
- Shelves
- Cooling Fans
- Rack ground Kit

Technical Data:	
Basic Frame	Steel
Construction	Welded / CKD
Top & Bottom Cover	Welded to Frame with Cable entry exit cut outs
Front Door	Lockable Toughened Glass Door
19" Mounting Angle	Formed Steel
Std. Equipment Mounting	DIN Std. 10mm Sq. Slots
Standard Finish	Powder coated
Standard Colour	Grey & Off White OR Black
Rack Standard	Conforms to DIN 41494 or equivalent standard
Static Load	30Kg

Model Matrix & Dimensions						
WM-Single Series	H	h	W	w	D	d
4U/550X400	258	4U	550	19"	400	380
4U/550X500	258	4U	550	19"	500	480
4U/550X550	258	4U	550	19"	550	530
4U/550X600	258	4U	550	19"	600	580
6U/550X400	347	6U	550	19"	400	380
6U/550X500	347	6U	550	19"	500	480
6U/550X550	347	6U	550	19"	550	530
6U/550X600	347	6U	550	19"	600	580
9U/550X400	481	9U	550	19"	400	380
9U/550X500	481	9U	550	19"	500	480
9U/550X550	481	9U	550	19"	550	530
9U/550X600	481	9U	550	19"	600	580
12U/550X400	613	12U	550	19"	400	380
12U/550X500	613	12U	550	19"	500	480
12U/550X550	613	12U	550	19"	550	530
12U/550X600	613	12U	550	19"	600	580
15U/550X400	749	15U	550	19"	400	380
15U/550X500	749	15U	550	19"	500	480
15U/550X550	749	15U	550	19"	550	530
15U/550X600	749	15U	550	19"	600	580

1U = 44.45 mm

Note : Other models can be manufactured on request.

### Abbreviations

H - Overall height    h - Usable height    W - Overall width    w - Usable width    D - Overall depth    d - Usable depth

### Overview

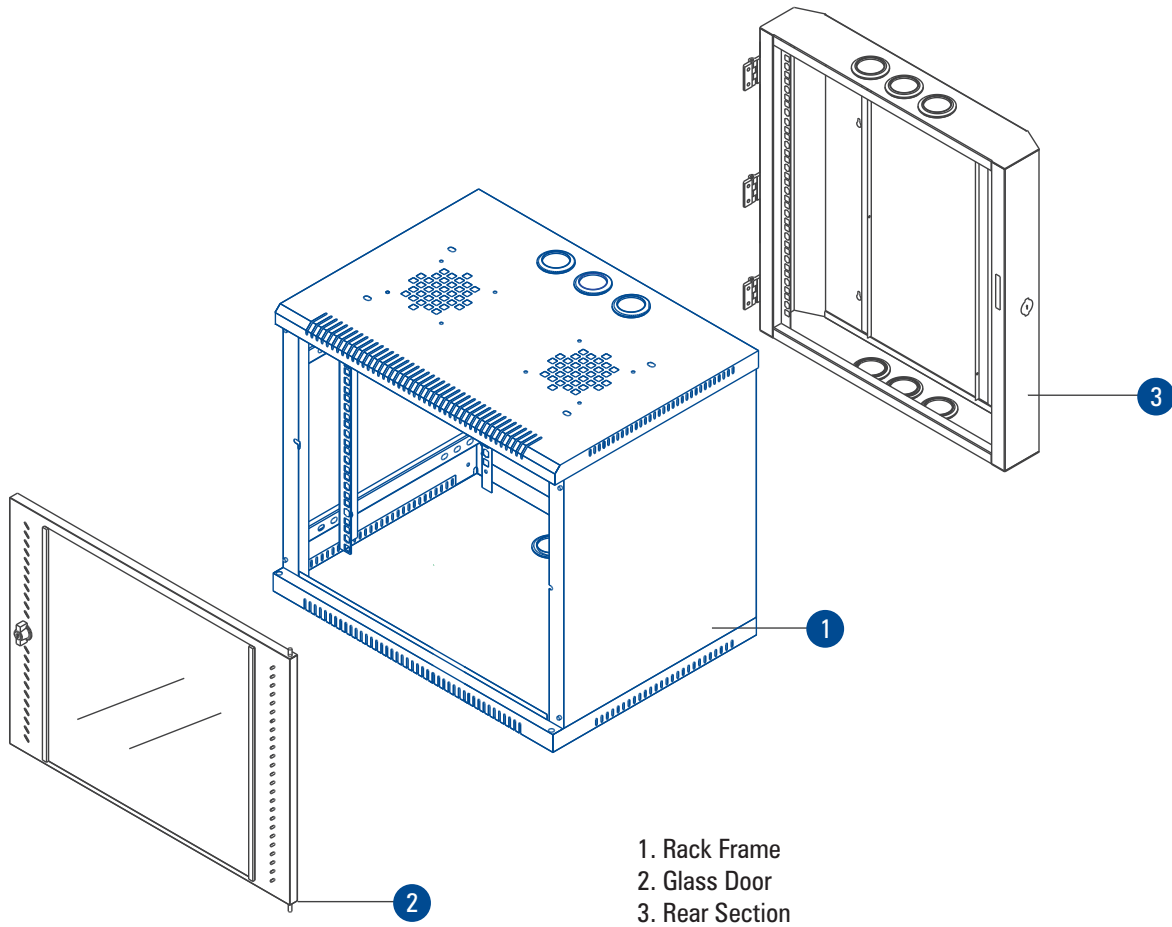
WM-DS Series, General Electronics Racks for Small Networking, AV, Telecom & Lab application. Racks manufactured out of steel sheet punched, formed, welded and powder coated with highest quality standards under stringent ISO 9001-2008 Manufacturing & Quality management system to ensure highest quality product.

Standard for Racks configuration will be welded frame integrated with side panel / removable side panel is available and vented top cover with fan mounting provision, Associated Front Glass Door with Lock & Key. Front Section will be hinged to Back section with high quality hinges. Back section will have wall mounting provision. Front & Back section can be Locked with Lock & Key.



Available in 6RU ~ 15RU Variants with 500 & 600 Depth configurations and 550 Width configurations.

## Double Section Wall Mount Configurator Drawing with Critical Parts



1. Rack Frame
2. Glass Door
3. Rear Section

### Features

- Conforms to DIN 41494 or Equivalent EIA /ISO / EN / CEA Standard
- Adjustable mounting depth
- 2 No Adjustable, 19" verticals with Punched 10 mm Square Hole and Universal 12.7mm-15.875mm-15.875mm alternating hole pattern offers greater mounting flexibility, maximizes usable mounting space.
- State-of-the-art manufacturing methods provide the best product quality and fastest delivery in the industry
- 100% assured compatibility with all equipments conforming to DIN 41494 (General industrial standard for equipments)
- Powder coated finish with seven tank pretreatment process meeting ASTM standard
- Grounding & Bonding options
- 1 or 2 Fan Mount provision on top cover

### Accessories:

- Cable Organisers
- Power Distribution Units
- Shelves
- Cooling Fans
- Rack ground Kit

## Technical Data:

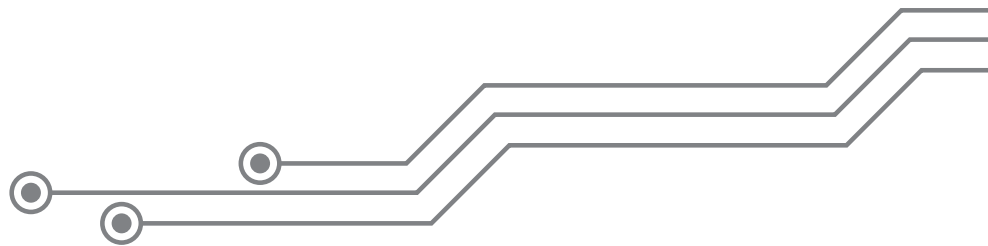
Basic Frame	Steel
Construction	Welded
Top & Bottom Cover	Welded to Frame with Cable entry exit cut outs
Front Door	Lockable Toughened Glass Door
19" Mounting Angle	Formed Steel
Std. Equipment Mounting	DIN Std. 10mm Sq. Slots
Standard Finish	Powder coated
Standard Colour	Grey & Off White OR Black
Rack Standard	Conforms to DIN 41494 or equivalent standard
Static Load	20Kg

## Model Matrix & Dimensions

WM-DS Series	H	h	W	w	D	d	D1
6U/550X500	347	6U	550	19"	500	380	100
9U/550X500	481	9U	550	19"	500	380	100
12U/550X500	613	12U	550	19"	500	380	100
15U/550X500	749	15U	550	19"	500	380	100
6U/550X600	347	6U	550	19"	600	480	100
9U/550X600	481	9U	550	19"	600	480	100
12U/550X600	613	12U	550	19"	600	480	100
15U/550X600	749	15U	550	19"	600	480	100

## Abbreviations

H - Overall height    h - Usable height    W - Overall width    w - Usable width    D - Overall depth    d - Usable depth  
D1 - Rear Section Depth



## Overview

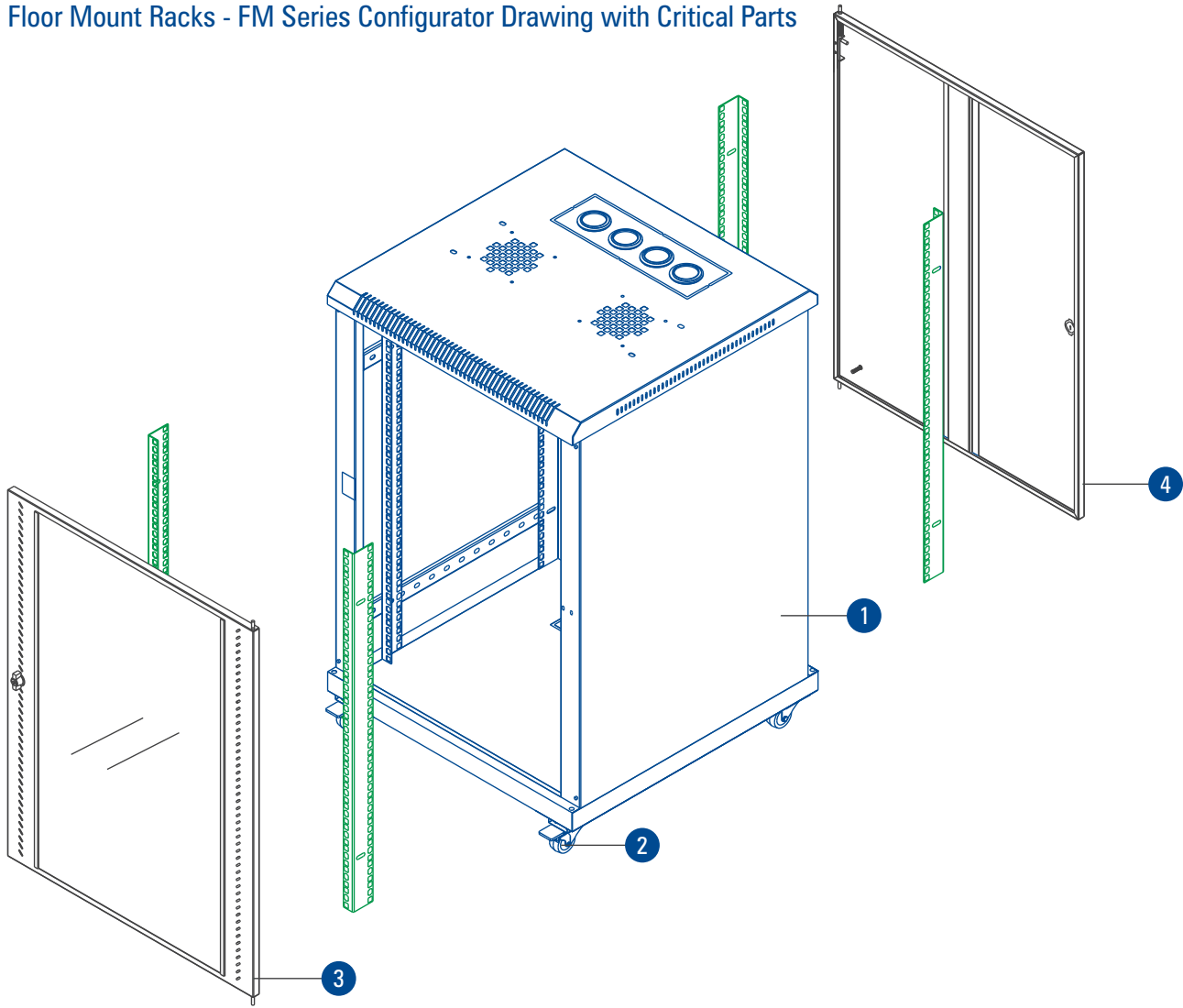
FM Series, General Electronics Racks for Small Networking, AV, Telecom & Lab application. Racks manufactured out of steel sheet punched, formed, welded and powder coated with highest quality standards under stringent ISO 9001-2008 Manufacturing & Quality management system to ensure highest quality product

Standard for Racks configuration will be welded frame integrated with side panel and vented top cover with fan mounting provision, associated with Front Glass Door with Lock & Key and Back Metal Door with Lock & Key and freestanding on floor with 4 No casters wheels with 2 No with brakes and 2 No without brakes



Available in 6RU ~32RU Variants with 600 Depth configurations and 600 Width configurations

Floor Mount Racks - FM Series Configurator Drawing with Critical Parts



1. Rack Frame
2. Casters
3. Glass Door
4. Metal Door

**Features**

- Conforms to DIN 41494 or Equivalent EIA /ISO / EN / CEA Standard
- Adjustable mounting depth
- 4 No Adjustable, 19" verticals with Punched 10 mm Square Hole and Universal 12.7mm-15.875mm-15.875mm alternating hole pattern offers greater mounting flexibility, maximizes usable mounting space
- Universal 25MM Pitch Holes For ETSI Standard Racks
- State-of-the-art manufacturing methods provide the best product quality and fastest delivery in the industry
- 100% assured compatibility with all equipments conforming to DIN 41494 (General industrial standard for equipments)
- Powder coated finish with seven tank pretreatment process meeting ASTM standard
- Grounding & Bonding options
- Fan module Mount provision on top cover



## Accessories:

- Cable Organisers
- Power Distribution Units
- Shelves
- Fan Modules
- Rack ground Kit

Technical Data:	
Basic Frame	Steel
Construction	Welded
Top & Bottom Cover	Welded to Frame with Cable entry exit cut outs
Front Door	Lockable Toughened Glass Door
Rear Door	Lockable Steel Door
19" Mounting Angle	Formed Steel
Std. Equipment Mounting	DIN Std. 10mm Sq. Slots
Standard Finish	Powder coated
Standard Colour	Grey & Off White OR Black
Standard Mounting	Caster wheels (2 with Brake & 2 without Brake)
Rack Standard	Conforms to DIN 41494 or equivalent standard
Static Load	150Kg

Model Matrix & Dimensions						
FM Series	H	h	W	w	D	d
6U 600x600	447	6U	600	19"	600	560
9U 600x600	580	9U	600	19"	600	560
12U 600x600	713	12U	600	19"	600	560
15U 600x600	846	15U	600	19"	600	560
17U 600x600	935	17U	600	19"	600	560
22U 600x600	1160	22U	600	19"	600	560
27U 600x600	1380	27U	600	19"	600	560
32U 600x600	1600	32U	600	19"	600	560

1U = 44.45 mm

### Note :

1. It is recommended to distribute the Load along with U space in the Rack
2. Other models can be manufactured on request
3. Dimension are in MM

## Abbreviations

H - Overall height    h - Usable height    W - Overall width    w - Usable width    D - Overall depth    d - Usable depth

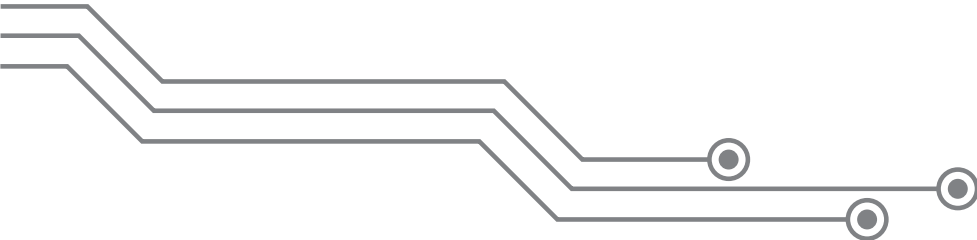
## Overview

NRS 1 Series, General Electronics Racks for Servers, Networking, AV, Telecom & Lab application. Racks are manufactured out of steel sheet punched, formed, welded and Powder coated with highest quality standards under stringent ISO 9001-2008 Manufacturing & Quality management system to ensure highest quality product.

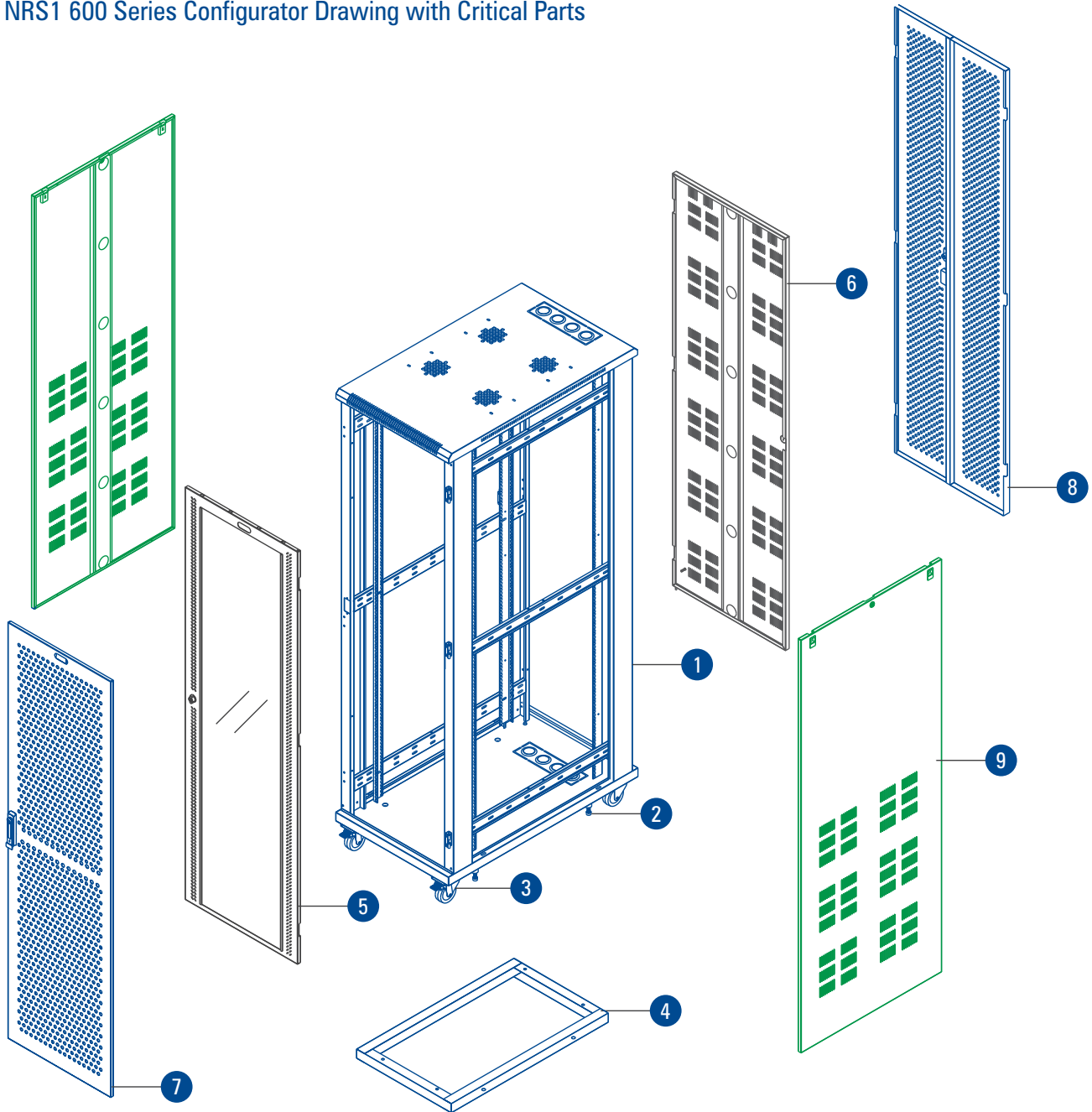
Standard for Racks configuration will be welded frame with vented top cover with fan mounting provision, Associated Front Glass or Perforated Metal Door with Lock & Key and Back Vented / Perforated Metal Door with Lock & Key and partially vented side panels, free standing on floor with 4 No. casters wheels with 2 No with brakes & 2 No. without brakes, optional levelers.



Available in 6RU~42RU Variants with 650, 800 & 1000 Depth configurations and 600 Width configurations.



NRS1 600 Series Configurator Drawing with Critical Parts



- |               |                          |
|---------------|--------------------------|
| 1. Rack Frame | 6. Metal Door            |
| 2. Levellers  | 7. Perforated Door/ Flat |
| 3. Castors    | 8. Perforated Door/ Dual |
| 4. Plinth     | 9. Sidepanel/ Vented     |
| 5. Glass Door |                          |

### Features

- Conforms to DIN 41494 or Equivalent EIA / ISO / EN / CEA Standard
- Adjustable mounting depth
- 4 No Adjustable, 19" verticals with Punched 10 mm Square Hole and Universal 12.7mm-15.875mm-15.875mm alternating hole pattern offers greater mounting flexibility, maximizes usable mounting space.
- Numbered U positions
- State-of-the-art manufacturing methods provide the best product quality and fastest delivery in the industry
- 100% assured compatibility with all equipments conforming to DIN 41494 (General industrial standard for equipments)
- Powder coated finish with Seven tank pre-treatment process meeting ASTM standard
- Grounding & Bonding Options
- Fan module Mount provision on top cover

### Accessories:

- Cable Basket
- Angle Pair
- Ganging Kit
- Fixed Shelf
- Cantilever Shelf
- Sliding Shelf
- Key Board Shelf
- Power Distribution Units
- Cable Organisers
- Fans and Fan Modules
- Rack Ground Kit
- Plinth
- Casters
- Levellers

Technical Data:	
Basic Frame	Steel folded
Construction	Welded or CKD
Top & Bottom Cover	Welded to Frame with Cable entry exit cut outs
Front Door	Lockable Toughened Glass Door OR Lockable Perforated steel Door
Rear Door	Lockable Steel Door - Plain / Vented / Perforated
19" Mounting Angle	Formed Steel
Std. Equipment Mounting	DIN Std. 10mm Sq. Slots
Standard Finish	Powder coated
Standard Colour	Grey & Off White OR Black
Standard Mounting	Caster wheels (2 with Brake & 2 without Brake) OR Levelers OR Plinth
Rack Standard	Conforms to DIN 41494 or equivalent standard
Static Load	350Kg with casters, 750 Kg with Levelers / Plinth

Model Matrix & Dimensions								
NRS 1 Series	H	h	W	w	D	d	Caster Type	Plinth Height(mm)
6U 600X650	371	6U	600	19"	650	550	TYPE-1	50/100
6U 600X800	371	6U	600	19"	800	700	TYPE-1	50/100
6U 600X1000	371	6U	600	19"	1000	900	TYPE-1	50/100
9U 600X650	504	9U	600	19"	650	550	TYPE-1	50/100
9U 600X800	504	9U	600	19"	800	700	TYPE-1	50/100
9U 600X1000	504	9U	600	19"	1000	900	TYPE-1	50/100
12U 600X650	637	12U	600	19"	650	550	TYPE-1	50/100
12U 600X800	637	12U	600	19"	800	700	TYPE-1	50/100
12U 600X1000	637	12U	600	19"	1000	900	TYPE-1	50/100
15U 600X650	770	15U	600	19"	650	550	TYPE-1	50/100
15U 600X800	770	15U	600	19"	800	700	TYPE-1	50/100
15U 600X1000	770	15U	600	19"	1000	900	TYPE-1	50/100
17U 600X650	859	17U	600	19"	650	550	TYPE-1	50/100
17U 600X800	859	17U	600	19"	800	700	TYPE-1	50/100
17U 600X1000	859	17U	600	19"	1000	900	TYPE-1	50/100
22U 600X650	1081	22U	600	19"	650	550	TYPE-2	50/100
22U 600X800	1081	22U	600	19"	800	700	TYPE-2	50/100
22U 600X1000	1081	22U	600	19"	1000	900	TYPE-2	50/100
24U 600X650	1170	24U	600	19"	650	550	TYPE-2	50/100
24U 600X800	1170	24U	600	19"	800	700	TYPE-2	50/100
24U 600X1000	1170	24U	600	19"	1000	900	TYPE-2	50/100
27U 600X650	1303	27U	600	19"	650	550	TYPE-2	50/100
27U 600X800	1303	27U	600	19"	800	700	TYPE-2	50/100
27U 600X1000	1303	27U	600	19"	1000	900	TYPE-2	50/100
30U 600X650	1436	30U	600	19"	650	550	TYPE-2	50/100
30U 600X800	1436	30U	600	19"	800	700	TYPE-2	50/100
30U 600X1000	1436	30U	600	19"	1000	900	TYPE-2	50/100
32U 600X650	1525	32U	600	19"	650	550	TYPE-3	50/100
32U 600X800	1525	32U	600	19"	800	700	TYPE-3	50/100
32U 600X1000	1525	32U	600	19"	1000	900	TYPE-3	50/100
34U 600X650	1614	34U	600	19"	650	550	TYPE-3	50/100
34U 600X800	1614	34U	600	19"	800	700	TYPE-3	50/100
34U 600X1000	1614	34U	600	19"	1000	900	TYPE-3	50/100
36U 600X650	1703	36U	600	19"	650	550	TYPE-3	50/100
36U 600X800	1703	36U	600	19"	800	700	TYPE-3	50/100
36U 600X1000	1703	36U	600	19"	1000	900	TYPE-3	50/100
38U 600X650	1792	38U	600	19"	650	550	TYPE-3	50/100
38U 600X800	1792	38U	600	19"	800	700	TYPE-3	50/100
38U 600X1000	1792	38U	600	19"	1000	900	TYPE-3	50/100
40U 600X650	1881	40U	600	19"	650	550	TYPE-3	50/100
40U 600X800	1881	40U	600	19"	800	700	TYPE-3	50/100
40U 600X1000	1881	40U	600	19"	1000	900	TYPE-3	50/100
42U 600X650	1970	42U	600	19"	650	550	TYPE-3	50/100
42U 600X800	1970	42U	600	19"	800	700	TYPE-3	50/100
42U 600X1000	1970	42U	600	19"	1000	900	TYPE-3	50/100

**Abbreviations**

H - Overall height    h - Usable height    W - Overall width    w - Usable width    D - Overall depth    d - Usable depth

## Overview

NRS 1 Series, General Electronics Racks for Servers, Networking, AV, Telecom & Lab application. Racks are manufactured out of steel sheet punched, formed, welded and Powder coated with highest quality standards under stringent ISO 9001-2008 Manufacturing & Quality management system to ensure highest quality product.

Standard for Racks configuration will be welded frame with vented top cover with fan mounting provision, Associated Front Glass or Perforated Metal Door with Lock & Key and Back Vented / Perforated Metal Door with Lock & Key and partially vented side panels, free standing on floor with 4 No. casters wheels with 2 No with brakes & 2 No. without brakes, optional levelers.

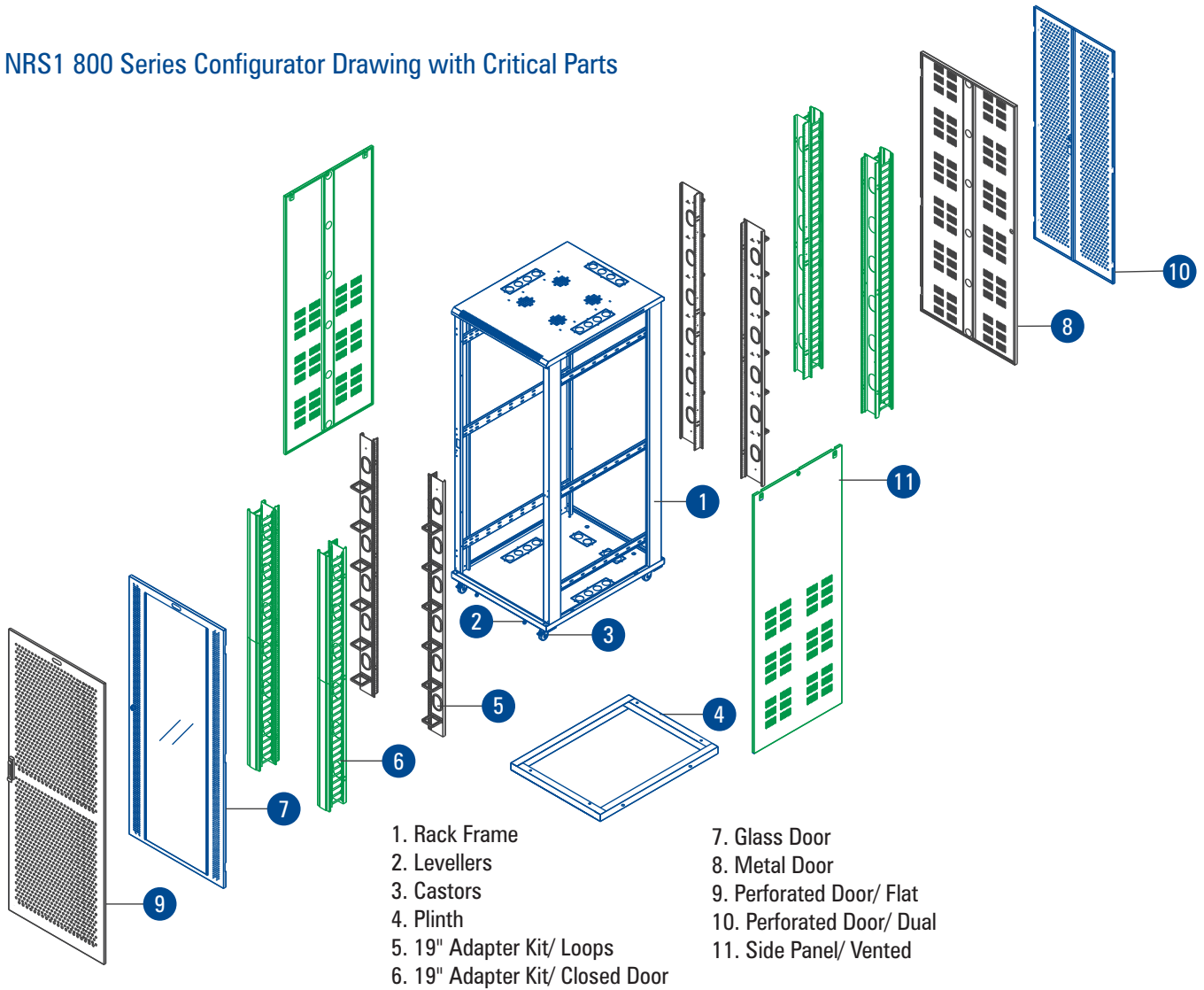


Available in 22RU~42RU Variants with 800 & 1000 Depth configurations and 800 Width configurations.





NRS1 800 Series Configurator Drawing with Critical Parts



Features

- Conforms to DIN 41494 or Equivalent EIA / ISO / EN / CEA Standard
- Adjustable mounting depth
- 4 No Adjustable, 19" verticals with Punched 10 mm Square Hole and Universal 12.7mm-15.875mm-15.875mm alternating hole pattern offers greater mounting flexibility, maximizes usable mounting space
- Numbered U positions
- State-of-the-art manufacturing methods provide the best product quality and fastest delivery in the industry
- 100% assured compatibility with all equipments conforming to DIN 41494 (General industrial standard for equipments)
- Powder coated finish with seven tank pretreatment process meeting ASTM standard
- Grounding & Bonding options
- Fan module Mount Provision on top cover

Accessories:

- |                |                    |                            |            |
|----------------|--------------------|----------------------------|------------|
| ■ Cable Basket | ■ Fixed Shelf      | ■ Power Distribution Units | ■ Plinth   |
| ■ Adapter Kit  | ■ Cantilever Shelf | ■ Cable Organisers.        | ■ Castors  |
| ■ Ganging Kit  | ■ Sliding Shelf    | ■ Fans and Fan Modules     | ■ Levelers |
| ■ Angle Pair   | ■ Key Board Shelf  | ■ Rack Ground Kit          |            |

Model Matrix & Dimensions

NRS 1 Series	H	h	W	w	D	d	Caster Type	Plinth Height(mm)
22U 800X800	1081	22U	800	19"/27"	800	700	TYPE-2	50/100
22U 800X1000	1081	22U	800	19"/27"	1000	900	TYPE-2	50/100
24U 800X800	1170	24U	800	19"/27"	800	700	TYPE-2	50/100
24U 800X1000	1170	24U	800	19"/27"	1000	900	TYPE-2	50/100
27U 800X800	1303	27U	800	19"/27"	800	700	TYPE-2	50/100
27U 800X1000	1303	27U	800	19"/27"	1000	900	TYPE-2	50/100
30U 800X800	1436	30U	800	19"/27"	800	700	TYPE-2	50/100
30U 800X1000	1436	30U	800	19"/27"	1000	900	TYPE-2	50/100
32U 800X800	1525	32U	800	19"/27"	800	700	TYPE-3	50/100
32U 800X1000	1525	32U	800	19"/27"	1000	900	TYPE-3	50/100
34U 800X800	1614	34U	800	19"/27"	800	700	TYPE-3	50/100
34U 800X1000	1614	34U	800	19"/27"	1000	900	TYPE-3	50/100
36U 800X800	1703	36U	800	19"/27"	800	700	TYPE-3	50/100
36U 800X1000	1703	36U	800	19"/27"	1000	900	TYPE-3	50/100
38U 800X800	1792	38U	800	19"/27"	800	700	TYPE-3	50/100
38U 800X1000	1792	38U	800	19"/27"	1000	900	TYPE-3	50/100
40U 800X800	1881	40U	800	19"/27"	800	700	TYPE-3	50/100
40U 800X1000	1881	40U	800	19"/27"	1000	900	TYPE-3	50/100
42U 800X800	1970	42U	800	19"/27"	800	700	TYPE-3	50/100
42U 800X1000	1970	42U	800	19"/27"	1000	900	TYPE-3	50/100

Note :

1. Overall Height = Frame Height+Plinth or Caster
2. Other models can be manufactured on request
3. It is recommended to distribute the Load along with U space in the Rack
4. Dimension are in MM

Abbreviations

H - Overall height    h - Usable height    W - Overall width    w - Usable width    D - Overall depth    d - Usable depth

Description	Height (mm)	Wheel BKT (mm)	Total
TYPE-1	65	12	77
TYPE-2	85	12	97
TYPE-3	105	12	117

## Overview

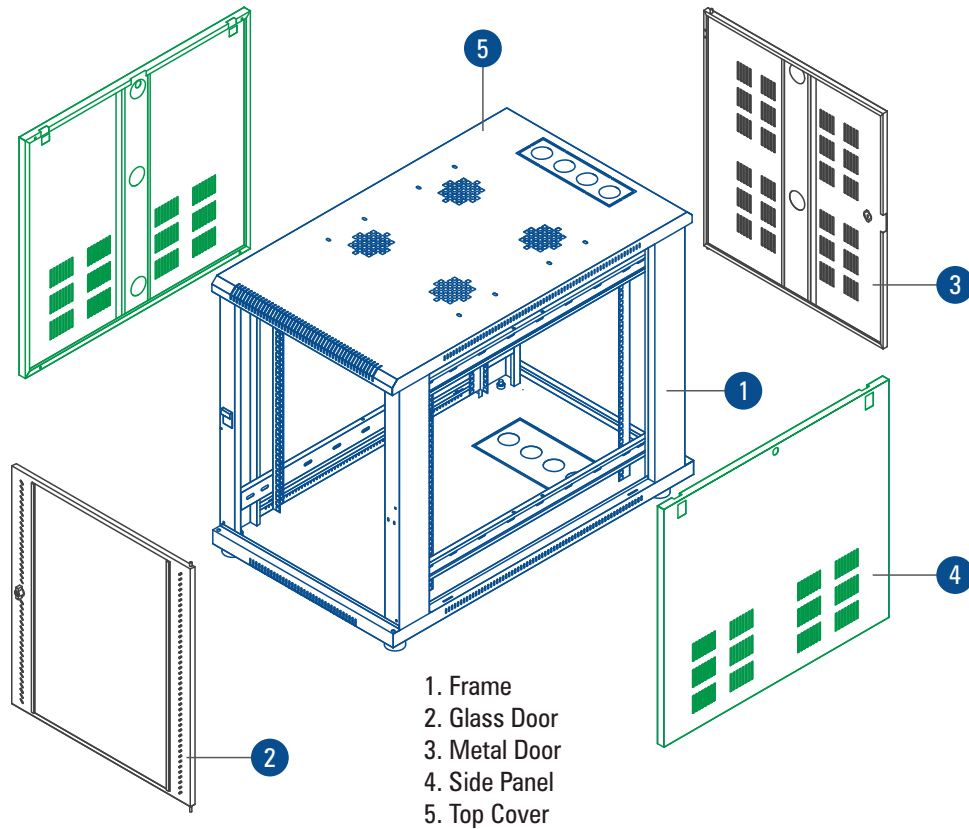
NRS1 Series (Table Mount) General Electronics Racks for Servers, Networking, AV, Telecom & Lab application. Racks are manufactured out of steel sheet punched, formed, welded and Powder coated with highest quality standards under stringent ISO 9001-2008 Manufacturing & Quality management system to ensure highest quality product.

Standard for Racks configuration will be welded frame with vented top cover with fan mounting provision, associated Front Glass or perforated Metal Door with Lock & Key and Back Vented / Perforated Metal Door with Lock & Key and partially vented side panels, mounted on table with 4 No bush/leveller.



Available in 6RU~15RU Variants with 650, 800,1000 Depth configurations and 600 Width configurations

Table Mount Rack - NRS1 Series Configurator Drawing with Critical Parts



Model Matrix & Dimensions

NRS 1 Series	H	h	W	w	D	d
6U 600X650	357	6U	600	19"	650	550
6U 600X800	357	6U	600	19"	800	700
6U 600X1000	357	6U	600	19"	1000	900
9U 600X650	490	9U	600	19"	650	550
9U 600X800	490	9U	600	19"	800	700
9U 600X1000	490	9U	600	19"	1000	900
12U 600X650	623	12U	600	19"	650	550
12U 600X800	623	12U	600	19"	800	700
12U 600X1000	623	12U	600	19"	1000	900
15U 600X650	757	15U	600	19"	650	550
15U 600X800	757	15U	600	19"	800	700
15U 600X1000	757	15U	600	19"	1000	900

1U = 44.45 mm

Note:

1. It is recommended to distribute the Load along with U space in the Rack
2. Dimension are in MM

Abbreviations

H - Overall height    h - Usable height    W - Overall width    w - Usable width    D - Overall depth    d - Usable depth