

## Overview

NRS Series are Rigid Racks for Servers, Networking, AV, Telecom & Lab application. Racks manufactured out of steel sheet punched, formed, welded and powder coated with highest quality standards under stringent ISO 9001-2008 Manufacturing & Quality management system to ensure highest quality product.

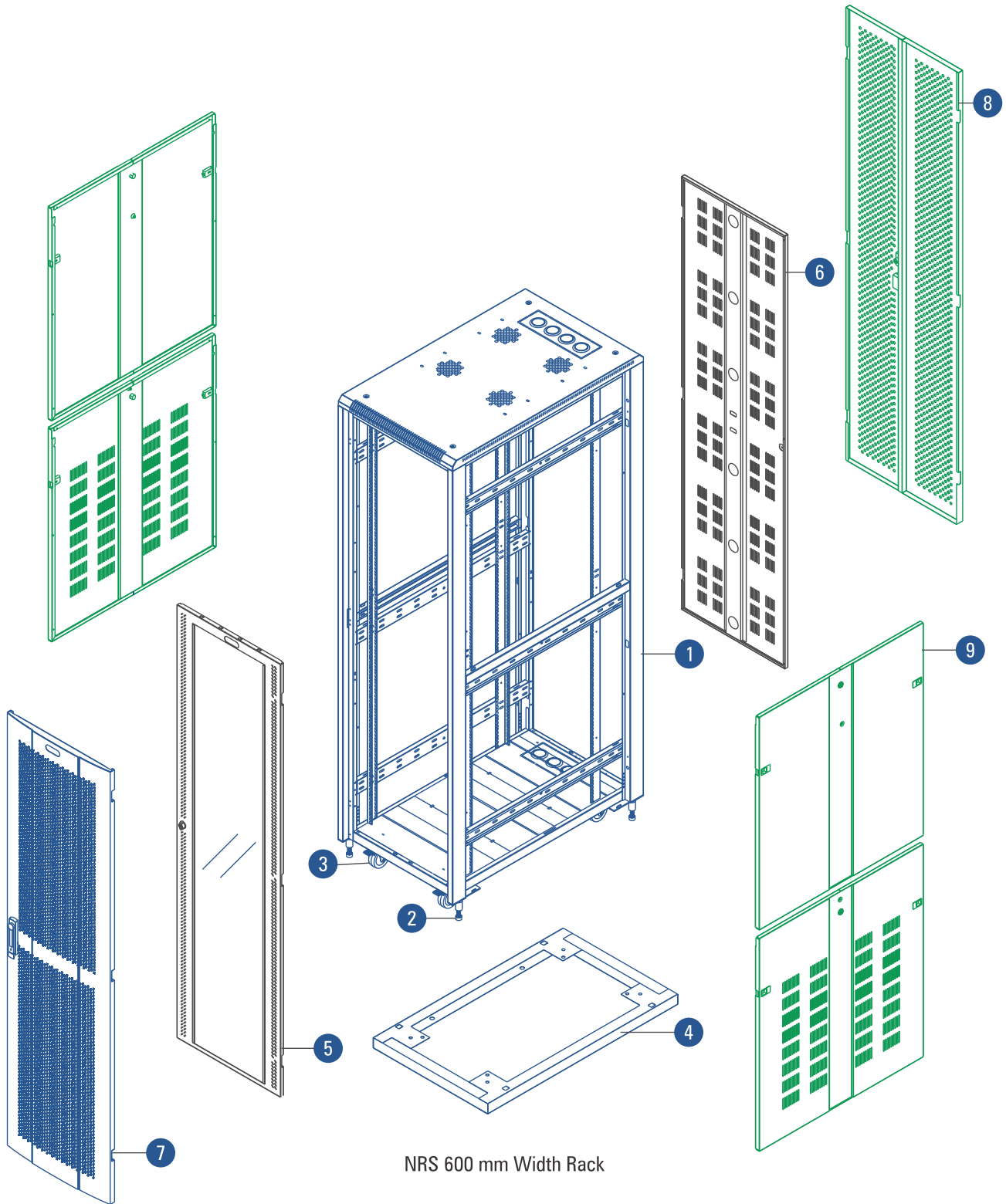
Standard for Racks configuration will be welded frame with 4 no pillars of 7 folded profile welded to top and bottom ribbed/reinforced frame additionally supported depth wise by welding 6 no depth rail 4 folded profile. Associated with vented top cover with fan mounting provision front glass or perforated metal door with lock & key and back vented / perforated metal door with lock & key and partially vented or plain side panels 1200 deep rack will be configured with dual side panel. Free standing on floor with 4 No casters wheels with 2 No with brakes and 2 Nos. without brakes & with levelers or plinth.



Available in 6RU~52RU Variants with 650, 800,1000 & 1200 Depth configurations and 600 Width configurations.



NRS 600 Series Configurator Drawing with Critical Parts



NRS 600 mm Width Rack

- |               |                             |
|---------------|-----------------------------|
| 1. Rack Frame | 6. Metal Door               |
| 2. Levellers  | 7. Perforated Door / Convex |
| 3. Castors    | 8. Perforated Door / Dual   |
| 4. Plinth     | 9. Sidepanel / Vented       |
| 5. Glass Door |                             |

## Features

- Conforms to DIN 41494 or Equivalent EIA / ISO / EN / CEA Standard
- Adjustable mounting depth
- 4 No adjustable, 19" verticals with punched 10 mm Square Hole and Universal 12.7mm-15.875mm-15.875mm alternating hole pattern offers greater mounting flexibility, maximizes usable mounting space
- Numbered U positions
- State-of-the-art manufacturing methods provide the best product quality and fastest delivery in the industry
- 100% assured compatibility with all equipments conforming to DIN 41494 (General industrial standard for equipments)
- Powder coated finish with seven tank pretreatment process meeting ASTM standard
- Grounding & Bonding Options
- Fan module Mount provision on top cover

## Accessories:

- Cable Basket
- Cantilever Shelf
- Cable Organisers
- Casters
- Angle Pair
- Sliding Shelf
- Fans and Fan Modules
- Levellers
- Ganging Kit
- Key Board Shelf
- Rack Ground Kit
- Rack Stabilizing Kit
- Fixed Shelf
- Power Distribution Units
- Plinth

## Technical Data:

Basic Frame	Steel folded
Construction	Welded or CKD
Top & Bottom Cover	Bolted to Frame with Cable entry exit cut outs
Front Door	Lockable Toughened Glass Door OR Lockable Perforated Steel Door
Rear Door	Lockable Steel Door - Plain / Vented / Perforated
19" Mounting Angle	Formed Steel
Std. Equipment Mounting	DIN Std. 10mm Sq. Slots
Standard Finish	Powder coated
Standard Colour	Grey & Off White OR Black
Standard Mounting	Caster wheels (2 with Brake & 2 without Brake) OR Levelers OR Plinth
Rack Standard	Conforms to DIN 41494 or equivalent standard
Static Load	750Kg with casters. 1250Kg with Levelers / Plinth

Model Matrix & Dimensions								
NRS Series	H	h	W	w	D	d	Caster Type	Plinth Height(mm)
6U 600X650	411	6U	600	19"	650	550	TYPE 1	—
6U 600X800	411	6U	600	19"	800	700	TYPE-1	—
6U 600X1000	411	6U	600	19"	1000	900	TYPE-1	—
9U 600X650	544	9U	600	19"	650	550	TYPE-1	—
9U 600X800	544	9U	600	19"	800	700	TYPE-1	—
9U 600X1000	544	9U	600	19"	1000	900	TYPE-1	—
12U 600X650	677	12U	600	19"	650	550	TYPE-1	—
12U 600X800	677	12U	600	19"	800	700	TYPE-1	—
12U 600X1000	677	12U	600	19"	1000	900	TYPE-1	—
15U 600X650	810	15U	600	19"	650	550	TYPE-1	—
15U 600X800	810	15U	600	19"	800	700	TYPE-1	—
15U 600X1000	810	15U	600	19"	1000	900	TYPE-1	—
17U 600X650	899	17U	600	19"	650	550	TYPE-1	—
17U 600X800	899	17U	600	19"	800	700	TYPE-1	—
17U 600X1000	899	17U	600	19"	1000	900	TYPE-1	—
22U 600X650	1121	22U	600	19"	650	550	TYPE-2	50/100
22U 600X800	1121	22U	600	19"	800	700	TYPE-2	50/100
22U 600X1000	1121	22U	600	19"	1000	900	TYPE-2	50/100
22U 600X1200	1121	22U	600	19"	1200	1100	TYPE-2	50/100
27U 600X650	1343	27U	600	19"	650	550	TYPE-2	50/100
27U 600X800	1343	27U	600	19"	800	700	TYPE-2	50/100
27U 600X1000	1343	27U	600	19"	1000	900	TYPE-2	50/100
27U 600X1200	1343	27U	600	19"	1200	1100	TYPE-2	50/100
32U 600X650	1565	32U	600	19"	650	550	TYPE-3	50/100
32U 600X800	1565	32U	600	19"	800	700	TYPE-3	50/100
32U 600X1000	1565	32U	600	19"	1000	900	TYPE-3	50/100
32U 600X1200	1565	32U	600	19"	1200	1100	TYPE-3	50/100
34U 600X650	1654	34U	600	19"	650	550	TYPE-3	50/100
34U 600X800	1654	34U	600	19"	800	700	TYPE-3	50/100
34U 600X1000	1654	34U	600	19"	1000	900	TYPE-3	50/100
34U 600X1200	1654	34U	600	19"	1200	1100	TYPE-3	50/100
36U 600X650	1743	36U	600	19"	650	550	TYPE-3	50/100
36U 600X800	1743	36U	600	19"	800	700	TYPE-3	50/100
36U 600X1000	1743	36U	600	19"	1000	900	TYPE-3	50/100
36U 600X1200	1743	36U	600	19"	1200	1100	TYPE-3	50/100
38U 600X650	1832	38U	600	19"	650	550	TYPE-3	50/100
38U 600X800	1832	38U	600	19"	800	700	TYPE-3	50/100
38U 600X1000	1832	38U	600	19"	1000	900	TYPE-3	50/100
38U 600X1200	1832	38U	600	19"	1200	1100	TYPE-3	50/100
40U 600X650	1921	40U	600	19"	650	550	TYPE-3	50/100
40U 600X800	1921	40U	600	19"	800	700	TYPE-3	50/100

### Model Matrix & Dimensions

NRS Series	H	h	W	w	D	d	Caster Type	Plinth Height(mm)
40U 600X1000	1921	40U	600	19"	1000	900	TYPE-3	50/100
40U 600X1200	1921	40U	600	19"	1200	1100	TYPE-3	50/100
42U 600X650	2010	42U	600	19"	650	550	TYPE-3	50/100
42U 600X800	2010	42U	600	19"	800	700	TYPE-3	50/100
42U 600X1000	2010	42U	600	19"	1000	900	TYPE-3	50/100
42U 600X1200	2010	42U	600	19"	1200	1100	TYPE-3	50/100
44U 600X650	2099	44U	600	19"	650	550	TYPE 3	50/100
44U 600X800	2099	44U	600	19"	800	700	TYPE 3	50/100
44U 600X1000	2099	44U	600	19"	1000	900	TYPE 3	50/100
44U 600X1200	2099	44U	600	19"	1200	1100	TYPE 3	50/100
45U 600X650	2143	45U	600	19"	650	550	TYPE 3	50/100
45U 600X800	2143	45U	600	19"	800	700	TYPE 3	50/100
45U 600X1000	2143	45U	600	19"	1000	900	TYPE 3	50/100
45U 600X1200	2143	45U	600	19"	1200	1100	TYPE 3	50/100
47U 600X650	2232	47U	600	19"	650	550	TYPE 3	50/100
47U 600X800	2232	47U	600	19"	800	700	TYPE 3	50/100
47U 600X1000	2232	47U	600	19"	1000	900	TYPE 3	50/100
47U 600X1200	2232	47U	600	19"	1200	1100	TYPE 3	50/100
48U 600X650	2276	48U	600	19"	650	550	TYPE 3	50/100
48U 600X800	2276	48U	600	19"	800	700	TYPE 3	50/100
48U 600X1000	2276	48U	600	19"	1000	900	TYPE 3	50/100
48U 600X1200	2276	48U	600	19"	1200	1100	TYPE 3	50/100
50U 600X650	2365	50U	600	19"	650	550	TYPE 3	50/100
50U 600X800	2365	50U	600	19"	800	700	TYPE 3	50/100
50U 600X1000	2365	50U	600	19"	1000	900	TYPE 3	50/100
50U 600X1200	2365	50U	600	19"	1200	1100	TYPE 3	50/100
52U 600X650	2454	52U	600	19"	650	550	TYPE 3	50/100
52U 600X800	2454	52U	600	19"	800	700	TYPE 3	50/100
52U 600X1000	2454	52U	600	19"	1000	900	TYPE 3	50/100
52U 600X1200	2454	52U	600	19"	1200	1100	TYPE 3	50/100

**Note :**

1. Overall Height = Frame Height+Plinth or Caster
2. Other models can be manufactured on request
3. It is recommended to distribute the Load along with U space in the Rack
4. Dimension are in MM

**Abbreviations**

H - Overall height    h - Usable height    W - Overall width    w - Usable width    D - Overall depth    d - Usable depth

Description	Height (mm)
TYPE-1	65
TYPE-2	85
TYPE-3	105

## Overview

NRS Series are Rigid Racks for Servers, Networking, AV, Telecom & Lab application. Racks manufactured out of steel sheet punched, formed, welded and powder coated with highest quality standards under stringent ISO 9001-2008 Manufacturing & Quality management system to ensure highest quality product.

Standard for racks configuration will be welded frame with 4 no pillars of 7 folded profile welded to top and bottom ribbed/reinforced frame additionally supported depth wise by welding 6 no depth rail 4 folded profile. Associated with vented top cover with fan mounting provision front glass or perforated metal door with lock & key and back vented / perforated metal door with lock & key and partially vented or Plain side panels 1200 deep rack will be configured with dual side panel. Free standing on floor with 4 No casters wheels with 2 No with brakes and 2 Nos. without brakes & with levelers or plinth.

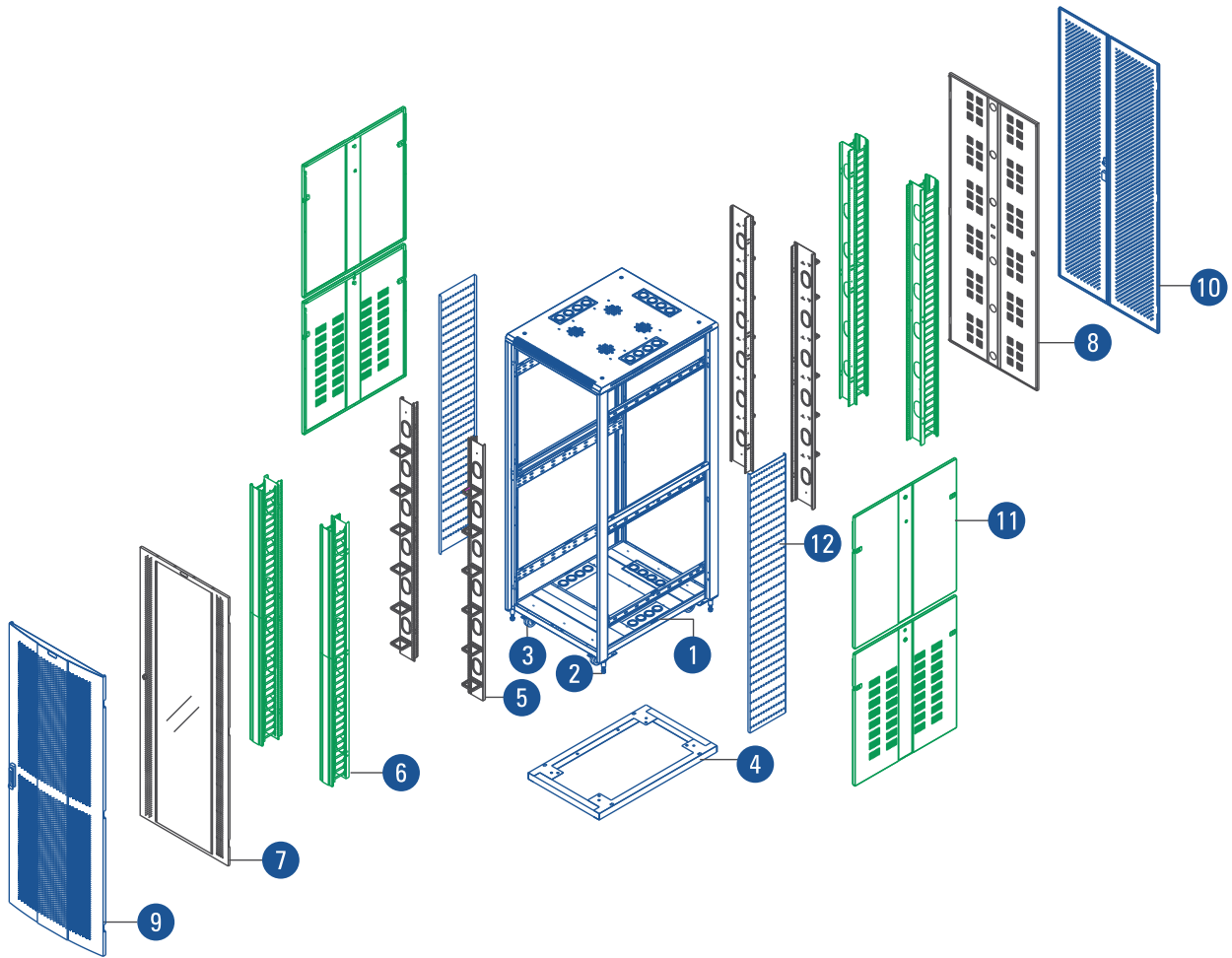


Available in 6RU~52RU Variants with 800,1000 & 1200 Depth configurations and 800 Width configurations.

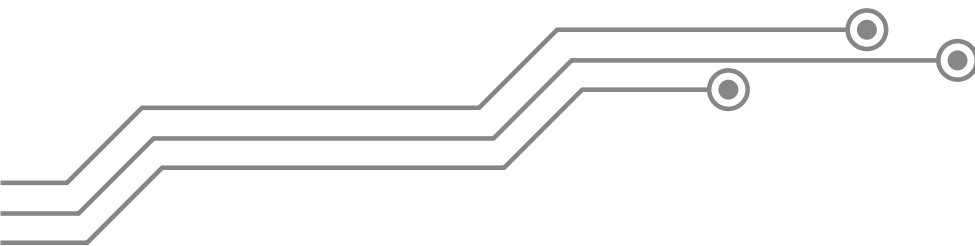




NRS 800 Series Configurator Drawing with Critical Parts



- |                                   |                             |
|-----------------------------------|-----------------------------|
| 1. Rack Frame                     | 7. Glass Door               |
| 2. Levellers                      | 8. Metal Door               |
| 3. Castors                        | 9. Perforated Door / Convex |
| 4. Plinth                         | 10. Perforated Door/ Dual   |
| 5. 19" Adapter Kit / Loops        | 11. Side Panel / Vented     |
| 6. 19" Adapter Kit / Closed/ Door | 12. Cable Basket            |



## Features

- Conforms to DIN 41494 or Equivalent EIA / ISO / EN / CEA Standard
- Adjustable mounting depth
- 4 No Adjustable, 19" verticals with punched 10 mm Square Hole and Universal 12.7mm-15.875mm-15.875mm alternating hole pattern offers greater mounting flexibility, maximizes usable mounting space
- Numbered U positions
- State-of-the-art manufacturing methods provide the best product quality and fastest delivery in the industry
- 100% assured compatibility with all equipments conforming to DIN 41494 (General industrial standard for equipments)
- Powder coated finish with seven tank pretreatment process meeting ASTM standard
- Grounding & Bonding Options
- Fan module Mount Provision on top Cover

## Accessories:

- Cable Basket
- Angle Pair
- Ganging Kit
- Fixed Shelf
- Cantilever Shelf
- Sliding Shelf
- Key Board Shelf
- Power Distribution Units
- Cable Organisers
- Fans and Fan Modules
- Rack Ground Kit
- Plinth
- Casters
- Levellers
- Rack Stabilizing Kit

## Technical Data:

Basic Frame	Steel folded
Construction	Welded or CKD
Top & Bottom Cover	Bolted to Frame with Cable entry exit cut outs
Front Door	Lockable Toughened Glass Door OR Lockable Perforated steel Door
Rear Door	Lockable Steel Door - Plain / Vented / Perforated
19" Mounting Angle	Formed Steel
Std. Equipment Mounting	DIN Std. 10mm Sq. Slots
Standard Finish	Powder coated
Standard Colour	Grey & Off White OR Black
Standard Mounting	Caster wheels (2 with Brake & 2 without Brake) OR Levelers OR Plinth
Rack Standard	Conforms to DIN 41494 or equivalent standard
Static Load	750Kg with casters. 1250Kg with Levelers / Plinth

Model Matrix & Dimensions								
NRS Series	H	h	W	w/w1	D	d	Caster Type	Plinth Height(mm)
6U 800X800	411	6U	800	19"/27"	800	700	TYPE-1	—
6U 800X1000	411	6U	800	19"/27"	1000	900	TYPE-1	—
9U 800X800	544	9U	800	19"/27"	800	700	TYPE-1	—
9U 800X1000	544	9U	800	19"/27"	1000	900	TYPE-1	—
12U 800X800	677	12U	800	19"/27"	800	700	TYPE-1	—
12U 800X1000	677	12U	800	19"/27"	1000	900	TYPE-1	—
15U 800X800	810	15U	800	19"/27"	800	700	TYPE-1	—
15U 800X1000	810	15U	800	19"/27"	1000	900	TYPE-1	—
17U 800X800	899	17U	800	19"/27"	800	700	TYPE-1	—
17U 800X1000	899	17U	800	19"/27"	1000	900	TYPE-1	—
22U 800X800	1121	22U	800	19"/27"	800	700	TYPE-2	50/100
22U 800X1000	1121	22U	800	19"/27"	1000	900	TYPE-2	50/100
22U 800X1200	1121	22U	800	19"/27"	1200	1100	TYPE-2	50/100
27U 800X800	1343	27U	800	19"/27"	800	700	TYPE-2	50/100
27U 800X1000	1343	27U	800	19"/27"	1000	900	TYPE-2	50/100
27U 800X1200	1343	27U	800	19"/27"	1200	1100	TYPE-2	50/100
32U 800X800	1565	32U	800	19"/27"	800	700	TYPE-3	50/100
32U 800X1000	1565	32U	800	19"/27"	1000	900	TYPE-3	50/100
32U 800X1200	1565	32U	800	19"/27"	1200	1100	TYPE-3	50/100
34U 800X800	1654	34U	800	19"/27"	800	700	TYPE-3	50/100
34U 800X1000	1654	34U	800	19"/27"	1000	900	TYPE-3	50/100
34U 800X1200	1654	34U	800	19"/27"	1200	1100	TYPE-3	50/100
36U 800X800	1743	36U	800	19"/27"	800	700	TYPE-3	50/100
36U 800X1000	1743	36U	800	19"/27"	1000	900	TYPE-3	50/100
36U 800X1200	1743	36U	800	19"/27"	1200	1100	TYPE-3	50/100
38U 800X800	1832	38U	800	19"/27"	800	700	TYPE-3	50/100
38U 800X1000	1832	38U	800	19"/27"	1000	900	TYPE-3	50/100
38U 800X1200	1832	38U	800	19"/27"	1200	1100	TYPE-3	50/100
40U 800X800	1921	40U	800	19"/27"	800	700	TYPE-3	50/100
40U 800X1000	1921	40U	800	19"/27"	1000	900	TYPE-3	50/100
40U 800X1200	1921	40U	800	19"/27"	1200	1100	TYPE-3	50/100
42U 800X800	2010	42U	800	19"/27"	800	700	TYPE-3	50/100
42U 800X1000	2010	42U	800	19"/27"	1000	900	TYPE-3	50/100
42U 800X1200	2010	42U	800	19"/27"	1200	1100	TYPE-3	50/100
44U 800X800	2099	44U	800	19"/27"	800	700	TYPE-3	50/100
44U 800X1000	2099	44U	800	19"/27"	1000	900	TYPE-3	50/100
44U 800X1200	2099	44U	800	19"/27"	1200	1100	TYPE-3	50/100
45U 800X800	2248	45U	800	19"/27"	800	700	TYPE-3	50/100
45U 800X1000	2248	45U	800	19"/27"	1000	900	TYPE-3	50/100
45U 800X1200	2248	45U	800	19"/27"	1200	1100	TYPE-3	50/100
47U 800X800	2337	47U	800	19"/27"	800	700	TYPE-3	50/100
47U 800X1000	2337	47U	800	19"/27"	1000	900	TYPE-3	50/100
47U 800X1200	2337	47U	800	19"/27"	1200	1100	TYPE-3	50/100
48U 800X800	2381	48U	800	19"/27"	800	700	TYPE-3	50/100

## Model Matrix & Dimensions

NRS Series	H	h	W	w/w1	D	d	Caster Type	Plinth Height(mm)
48U 800X1000	2381	48U	800	19"/27"	1000	900	TYPE-3	50/100
48U 800X1200	2381	48U	800	19"/27"	1200	1100	TYPE-3	50/100
50U 800X800	2470	50U	800	19"/27"	800	700	TYPE-3	50/100
50U 800X1000	2470	50U	800	19"/27"	1000	900	TYPE-3	50/100
50U 800X1200	2470	50U	800	19"/27"	1200	1100	TYPE-3	50/100
52U 800X800	2559	52U	800	19"/27"	800	700	TYPE-3	50/100
52U 800X1000	2559	52U	800	19"/27"	1000	900	TYPE-3	50/100
52U 800X1200	2559	52U	800	19"/27"	1200	1100	TYPE-3	50/100

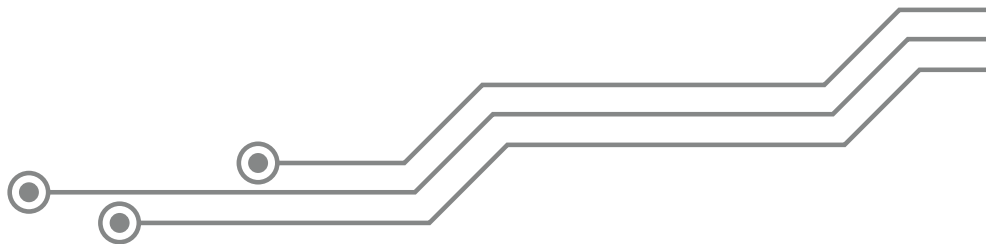
**Note :**

1. Overall Height = Frame Height + Plinth or Caster
2. Other models can be manufactured on request
3. It is recommended to distribute the Load along with U space in the Rack
4. Dimension are in MM

### Abbreviations

H - Overall height    h - Usable height    W - Overall width    w - Usable width    D - Overall depth    d - Usable depth

Description	Height (mm)
TYPE-1	65
TYPE-2	85
TYPE-3	105



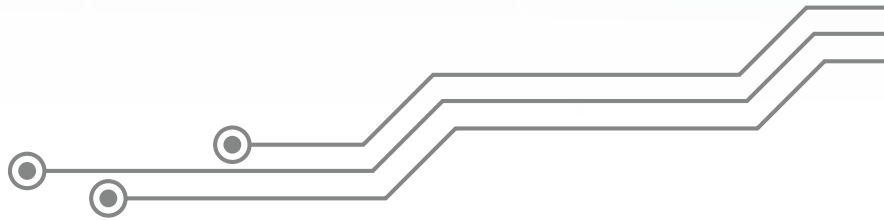
## Overview

NRA Series, Rigid Racks for Servers, Networking, AV, Telecom & Lab application. Racks manufactured out of aluminum profile, Formed steel frames & members, individually powder coated and bolted with highest quality standards under stringent ISO 9001-2008 Manufacturing & Quality management system.

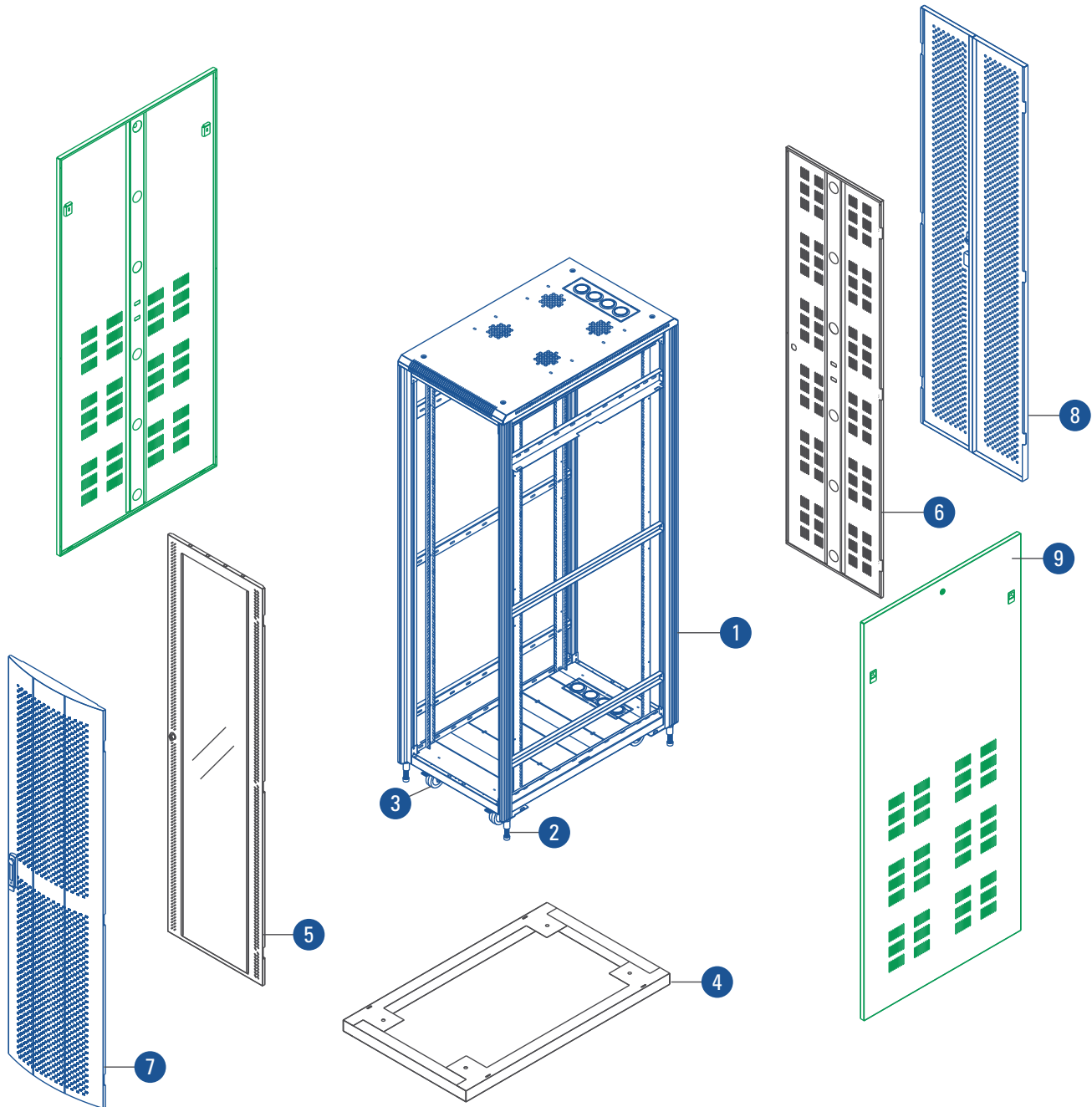
Standard for Racks configuration will be bolted frame with 4 No. pillars made of aluminium extruded profile bolted to top and bottom ribbed/ reinforced frame additionally supported depth wise by 6 no depth rail 2 folded profile. Associated with vented top cover with fan mounting provision. Front Glass or perforated Metal Door with Lock & Key and Back Vented / Perforated Metal Door with Lock & Key and partially Vented or Plain side panels, 1200 deep rack will be configured with dual side panel. Free standing on floor with 4 No casters wheels with 2 Nos. with brakes and 2 Nos. without brakes & with levelers OR plinth.



Available in 6RU~52RU Variants with 650, 800,1000 & 1200 Depth configurations and 600 Width configurations



NRA 600 Series Configurator Drawing with Critical Parts

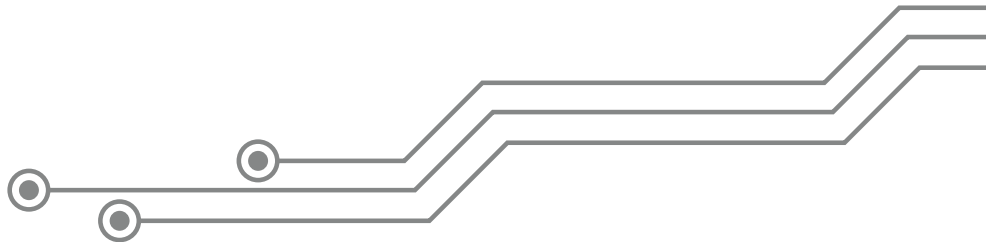


- 1. Rack Frame
- 2. Levellers
- 3. Castors
- 4. Plinth
- 5. Glass Door
- 6. Metal Door
- 7. Perforated Door / Convex
- 8. Perforated Door / Dual
- 9. Side Panel / Vented

## Features

- Conforms to DIN 41494 or Equivalent EIA / ISO / EN / CEA Standard
- Adjustable mounting depth
- 4 No Adjustable, 19" verticals with punched 10 mm Square Hole and Universal 12.7mm-15.875mm-15.875mm alternating hole pattern offers greater mounting flexibility, maximizes usable mounting space
- Numbered U positions
- State-of-the-art manufacturing methods provide the best product quality and fastest delivery in the industry
- 100% assured compatibility with all equipments conforming to DIN 41494 (General industrial standard for equipments)
- Powder coated finish with seven tank pretreatment process meeting ASTM standard
- Grounding & Bonding Options
- Fan module Mount provision on top cover

Technical Data:	
Basic Frame	Composite (Aluminium Section & Steel)
Construction	CKD Type
Top & Bottom Cover	Bolted to Frame with Cable entry exit cut outs
Front Door	Lockable Toughened Glass Door OR Lockable Perforated steel Door
Rear Door	Lockable Steel Door - Plain / Vented / Perforated
19" Mounting Angle	Formed Steel
Std. Equipment Mounting	DIN Std. 10mm Sq. Slots
Standard Finish	Powder coated
Standard Colour	Grey & Off White OR Black
Standard Mounting	Caster wheels (2 with Brake & 2 without Brake) OR Levelers OR Plinth
Rack Standard	Conforms to DIN 41494 or equivalent standard
Static Load	750Kg with casters. 1250Kg with Levelers / Plinth





Model Matrix & Dimensions								
NRA Series	H	h	W	w	D	d	Caster Type	Plinth Height(mm)
6U 600X650	411	6U	600	19"	650	550	TYPE 1	—
6U 600X800	411	6U	600	19"	800	700	TYPE-1	—
6U 600X1000	411	6U	600	19"	1000	900	TYPE-1	—
9U 600X650	544	9U	600	19"	650	550	TYPE-1	—
9U 600X800	544	9U	600	19"	800	700	TYPE-1	—
9U 600X1000	544	9U	600	19"	1000	900	TYPE-1	—
12U 600X650	677	12U	600	19"	650	550	TYPE-1	—
12U 600X800	677	12U	600	19"	800	700	TYPE-1	—
12U 600X1000	677	12U	600	19"	1000	900	TYPE-1	—
15U 600X650	810	15U	600	19"	650	550	TYPE-1	—
15U 600X800	810	15U	600	19"	800	700	TYPE-1	—
15U 600X1000	810	15U	600	19"	1000	900	TYPE-1	—
17U 600X650	899	17U	600	19"	650	550	TYPE-1	—
17U 600X800	899	17U	600	19"	800	700	TYPE-1	—
17U 600X1000	899	17U	600	19"	1000	900	TYPE-1	—
22U 600X650	1121	22U	600	19"	650	550	TYPE-2	50/100
22U 600X800	1121	22U	600	19"	800	700	TYPE-2	50/100
22U 600X1000	1121	22U	600	19"	1000	900	TYPE-2	50/100
22U 600X1200	1121	22U	600	19"	1200	1100	TYPE-2	50/100
27U 600X650	1343	27U	600	19"	650	550	TYPE-2	50/100
27U 600X800	1343	27U	600	19"	800	700	TYPE-2	50/100
27U 600X1000	1343	27U	600	19"	1000	900	TYPE-2	50/100
27U 600X1200	1343	27U	600	19"	1200	1100	TYPE-2	50/100
32U 600X650	1565	32U	600	19"	650	550	TYPE-3	50/100
32U 600X800	1565	32U	600	19"	800	700	TYPE-3	50/100
32U 600X1000	1565	32U	600	19"	1000	900	TYPE-3	50/100
32U 600X1200	1565	32U	600	19"	1200	1100	TYPE-3	50/100
34U 600X650	1654	34U	600	19"	650	550	TYPE-3	50/100
34U 600X800	1654	34U	600	19"	800	700	TYPE-3	50/100
34U 600X1000	1654	34U	600	19"	1000	900	TYPE-3	50/100
34U 600X1200	1654	34U	600	19"	1200	1100	TYPE-3	50/100
36U 600X650	1743	36U	600	19"	650	550	TYPE-3	50/100
36U 600X800	1743	36U	600	19"	800	700	TYPE-3	50/100
36U 600X1000	1743	36U	600	19"	1000	900	TYPE-3	50/100
36U 600X1200	1743	36U	600	19"	1200	1100	TYPE-3	50/100
38U 600X650	1832	38U	600	19"	650	550	TYPE-3	50/100
38U 600X800	1832	38U	600	19"	800	700	TYPE-3	50/100
38U 600X1000	1832	38U	600	19"	1000	900	TYPE-3	50/100
38U 600X1200	1832	38U	600	19"	1200	1100	TYPE-3	50/100
40U 600X650	1921	40U	600	19"	650	550	TYPE-3	50/100
40U 600X800	1921	40U	600	19"	800	700	TYPE-3	50/100
40U 600X1000	1921	40U	600	19"	1000	900	TYPE-3	50/100
40U 600X1200	1921	40U	600	19"	1200	1100	TYPE-3	50/100
42U 600X650	2010	42U	600	19"	650	550	TYPE-3	50/100

Model Matrix & Dimensions

NRA Series	H	h	W	w	D	d	Caster Type	Plinth Height(mm)
42U 600X800	2010	42U	600	19"	800	700	TYPE-3	50/100
42U 600X1000	2010	42U	600	19"	1000	900	TYPE-3	50/100
42U 600X1200	2010	42U	600	19"	1200	1100	TYPE-3	50/100
44U 600X650	2099	44U	600	19"	650	550	TYPE 3	50/100
44U 600X800	2099	44U	600	19"	800	700	TYPE 3	50/100
44U 600X1000	2099	44U	600	19"	1000	900	TYPE 3	50/100
44U 600X1200	2099	44U	600	19"	1200	1100	TYPE 3	50/100
45U 600X650	2143	45U	600	19"	650	550	TYPE 3	50/100
45U 600X800	2143	45U	600	19"	800	700	TYPE 3	50/100
45U 600X1000	2143	45U	600	19"	1000	900	TYPE 3	50/100
45U 600X1200	2143	45U	600	19"	1200	1100	TYPE 3	50/100
47U 600X650	2232	47U	600	19"	650	550	TYPE 3	50/100
47U 600X800	2232	47U	600	19"	800	700	TYPE 3	50/100
47U 600X1000	2232	47U	600	19"	1000	900	TYPE 3	50/100
47U 600X1200	2232	47U	600	19"	1200	1100	TYPE 3	50/100
48U 600X650	2276	48U	600	19"	650	550	TYPE 3	50/100
48U 600X800	2276	48U	600	19"	800	700	TYPE 3	50/100
48U 600X1000	2276	48U	600	19"	1000	900	TYPE 3	50/100
48U 600X1200	2276	48U	600	19"	1200	1100	TYPE 3	50/100

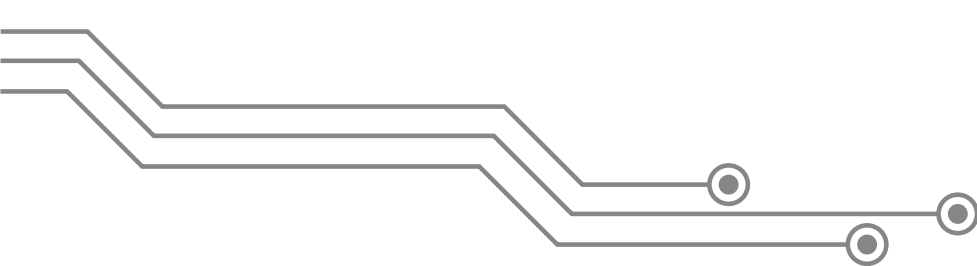
Note:

1. Overall Height = Frame Height + Plinth or Caster
2. It is recommended to distribute the Load along with U space in the Rack
3. Dimension are in MM

Abbreviations

H - Overall height    h - Usable height    W - Overall width    w - Usable width    D - Overall depth    d - Usable depth

Description	Height (mm)
TYPE-1	65
TYPE-2	85
TYPE-3	105



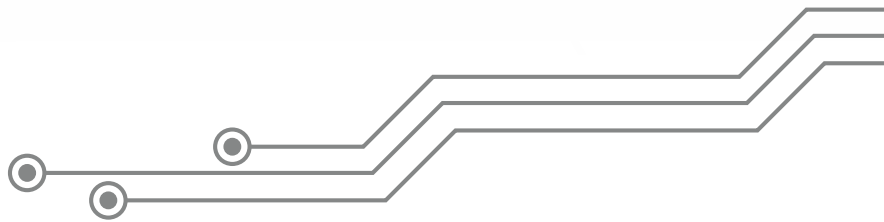
## Overview

NRA Series, Rigid Racks for Servers, Networking, AV, Telecom & Lab application. Racks manufactured out of aluminum profile, formed steel frames & members, individually powder coated & bolted with highest quality standards under stringent ISO 9001-2008 Manufacturing & Quality management system.

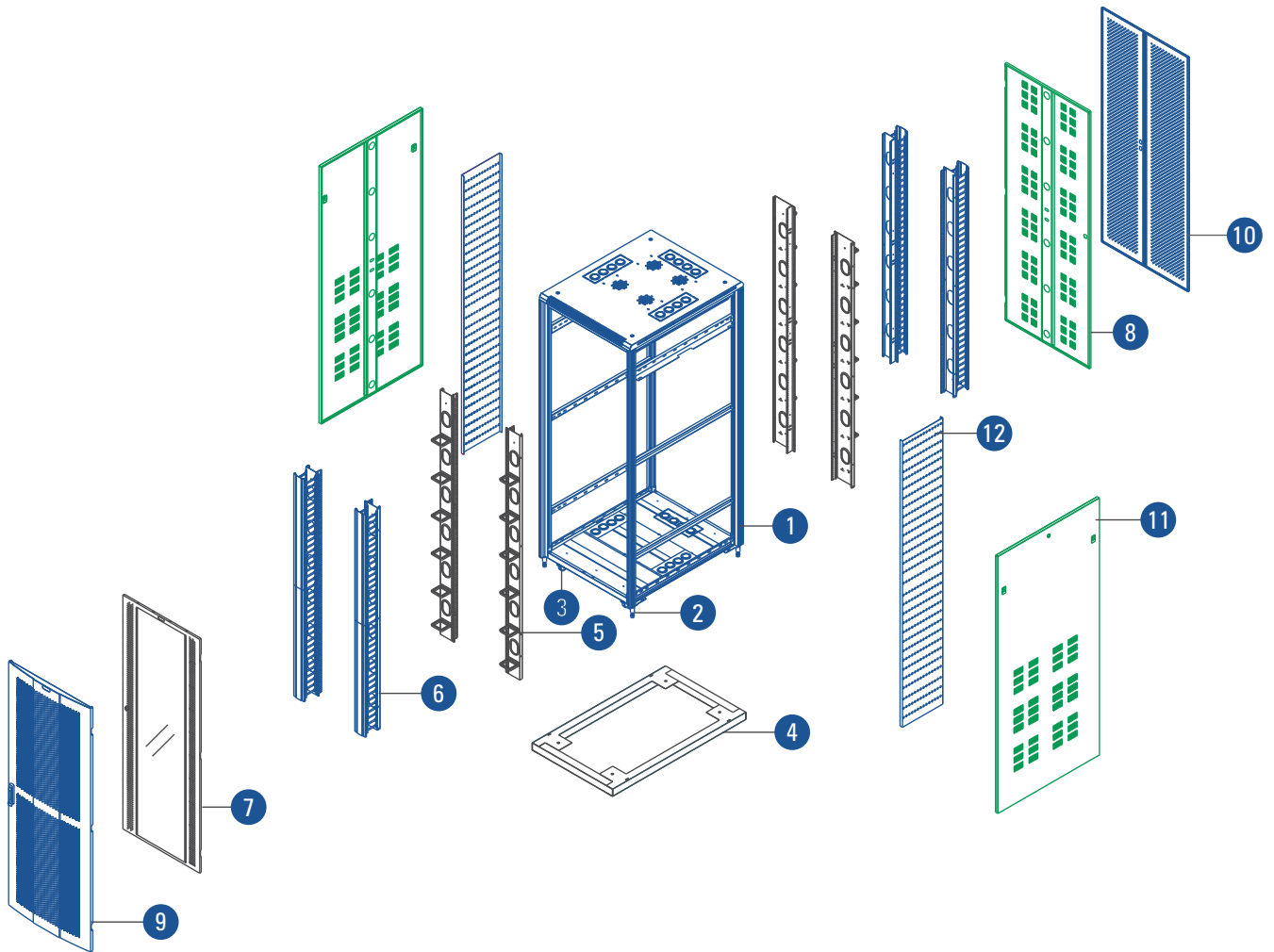
Standard for Racks configuration will be bolted frame with 4 No. pillars made of aluminium extruded profile bolted to top and bottom ribbed/ reinforced frame additionally supported depth wise by 6 no depth rail 2 folded profile. Associated with vented top cover with fan mounting provision Front Glass or perforated Metal Door with Lock & Key and Back Vented / Perforated Metal Door with Lock & Key and partially vented or Plain side panels, 1200 deep rack will be configured with dual side panel. Free standing on floor with 4 No casters wheels with 2 Nos. with brakes and 2 Nos. without brakes & with Levelers OR plinth.



Available in 6RU~52RU Variants with 800,1000 & 1200 Depth configurations and 800 Width configurations



NRA 800 Series Configurator Drawing with Critical Parts



- |                                  |                             |
|----------------------------------|-----------------------------|
| 1. Rack Frame                    | 7. Glass Door               |
| 2. Levellers                     | 8. Metal Door               |
| 3. Castors                       | 9. Perforated Door / Convex |
| 4. Plinth                        | 10. Perforated Door / Dual  |
| 5. 19" Adapter Kit/ loops        | 11. Side Panel / Vented     |
| 6. 19" Adapter Kit / Closed Door | 12. Cable Basket            |

## Features

- Conforms to DIN 41494 or Equivalent EIA / ISO / EN / CEA Standard
- Adjustable mounting depth
- 4 No Adjustable, 19" verticals with punched 10 mm Square Hole and Universal 12.7mm-15.875mm-15.875mm alternating hole pattern offers greater mounting flexibility, maximizes usable mounting space
- Numbered U positions
- State-of-the-art manufacturing methods provide the best product quality and fastest delivery in the industry
- 100% assured compatibility with all equipments conforming to DIN 41494 (General industrial standard for equipments)
- Powder coated finish with seven tank pretreatment process meeting ASTM standard
- Grounding & Bonding Options
- Fan module Mount Provision on top cover

## Accessories:

- |                |                    |                            |                        |
|----------------|--------------------|----------------------------|------------------------|
| ■ Cable Basket | ■ Fixed Shelf      | ■ Power Distribution Units | ■ Plinth               |
| ■ Adapter Kit  | ■ Cantilever Shelf | ■ Cable Organisers         | ■ Casters              |
| ■ Ganging Kit  | ■ Sliding Shelf    | ■ Fans and Fan Modules     | ■ Levellers            |
| ■ Angle Pair   | ■ Key Board Shelf  | ■ Rack Ground Kit          | ■ Rack Stabilizing Kit |

## Technical Data:

Basic Frame	Composite (Aluminium Section & Steel)
Construction	CKD Type
Top & Bottom Cover	Bolted to Frame with Cable entry exit cut outs
Front Door	Lockable Toughened Glass Door OR Lockable Perforated steel Door
Rear Door	Lockable Steel Door - Plain / Vented / Perforated
19" Mounting Angle	Formed Steel
Std. Equipment Mounting	DIN Std. 10mm Sq. Slots
Standard Finish	Powder coated
Standard Colour	Grey & Off White OR Black
Standard Mounting	Caster wheels (2 with Brake & 2 without Brake) OR Levelers OR Plinth
Rack Standard	Conforms to DIN 41494 or equivalent standard
Static Load	750Kg with casters. 1250Kg with Levelers / Plinth

Model Matrix & Dimensions								
NRA Series	H	h	W	w	D	d	Caster Type	Plinth Height(mm)
6U 800X800	411	6U	800	19"/27"	800	700	TYPE-1	—
6U 800X1000	411	6U	800	19"/27"	1000	900	TYPE-1	—
9U 800X800	544	9U	800	19"/27"	800	700	TYPE-1	—
9U 800X1000	544	9U	800	19"/27"	1000	900	TYPE-1	—
12U 800X800	677	12U	800	19"/27"	800	700	TYPE-1	—
12U 800X1000	677	12U	800	19"/27"	1000	900	TYPE-1	—
15U 800X800	810	15U	800	19"/27"	800	700	TYPE-1	—
15U 800X1000	810	15U	800	19"/27"	1000	900	TYPE-1	—
17U 800X800	899	17U	800	19"/27"	800	700	TYPE-1	—
17U 800X1000	899	17U	800	19"/27"	1000	900	TYPE-1	—
22U 800X800	1121	22U	800	19"/27"	800	700	TYPE-2	50/100
22U 800X1000	1121	22U	800	19"/27"	1000	900	TYPE-2	50/100
22U 800X1200	1121	22U	800	19"/27"	1200	1100	TYPE-2	50/100
27U 800X800	1343	27U	800	19"/27"	800	700	TYPE-2	50/100
27U 800X1000	1343	27U	800	19"/27"	1000	900	TYPE-2	50/100
27U 800X1200	1343	27U	800	19"/27"	1200	1100	TYPE-2	50/100
32U 800X800	1565	32U	800	19"/27"	800	700	TYPE-3	50/100
32U 800X1000	1565	32U	800	19"/27"	1000	900	TYPE-3	50/100
32U 800X1200	1565	32U	800	19"/27"	1200	1100	TYPE-3	50/100
34U 800X800	1654	34U	800	19"/27"	800	700	TYPE-3	50/100
34U 800X1000	1654	34U	800	19"/27"	1000	900	TYPE-3	50/100
34U 800X1200	1654	34U	800	19"/27"	1200	1100	TYPE-3	50/100
36U 800X800	1743	36U	800	19"/27"	800	700	TYPE-3	50/100
36U 800X1000	1743	36U	800	19"/27"	1000	900	TYPE-3	50/100
36U 800X1200	1743	36U	800	19"/27"	1200	1100	TYPE-3	50/100
38U 800X800	1832	38U	800	19"/27"	800	700	TYPE-3	50/100
38U 800X1000	1832	38U	800	19"/27"	1000	900	TYPE-3	50/100
38U 800X1200	1832	38U	800	19"/27"	1200	1100	TYPE-3	50/100
40U 800X800	1921	40U	800	19"/27"	800	700	TYPE-3	50/100
40U 800X1000	1921	40U	800	19"/27"	1000	900	TYPE-3	50/100
40U 800X1200	1921	40U	800	19"/27"	1200	1100	TYPE-3	50/100
42U 800X800	2010	42U	800	19"/27"	800	700	TYPE-3	50/100
42U 800X1000	2010	42U	800	19"/27"	1000	900	TYPE-3	50/100
42U 800X1200	2010	42U	800	19"/27"	1200	1100	TYPE-3	50/100
44U 800X800	2099	44U	800	19"/27"	800	700	TYPE-3	50/100
44U 800X1000	2099	44U	800	19"/27"	1000	900	TYPE-3	50/100
44U 800X1200	2099	44U	800	19"/27"	1200	1100	TYPE-3	50/100
45U 800X800	2143	45U	800	19"/27"	800	700	TYPE-3	50/100
45U 800X1000	2143	45U	800	19"/27"	1000	900	TYPE-3	50/100
45U 800X1200	2143	45U	800	19"/27"	1200	1100	TYPE-3	50/100

**Abbreviations**

H - Overall height    h - Usable height    W - Overall width    w - Usable width    D - Overall depth    d - Usable depth

## Model Matrix & Dimensions

NRA Series	H	h	W	w	D	d	Caster Type	Plinth Height(mm)
47U 800X800	2232	47U	800	19"/27"	800	700	TYPE-3	50/100
47U 800X1000	2232	47U	800	19"/27"	1000	900	TYPE-3	50/100
47U 800X1200	2232	47U	800	19"/27"	1200	1100	TYPE-3	50/100
48U 800X800	2276	48U	800	19"/27"	800	700	TYPE-3	50/100
48U 800X1000	2276	48U	800	19"/27"	1000	900	TYPE-3	50/100
48U 800X1200	2276	48U	800	19"/27"	1200	1100	TYPE-3	50/100

### Note :

1. Overall Height = Frame Height+Plinth or Caster
2. Other models can be manufactured on request
3. It is recommended to distribute the Load along with U space in the Rack
4. Dimension are in MM

### Abbreviations

H - Overall height    h - Usable height    W - Overall width    w - Usable width    D - Overall depth    d - Usable depth

Description	Height (mm)
TYPE-1	65
TYPE-2	85
TYPE-3	105

