

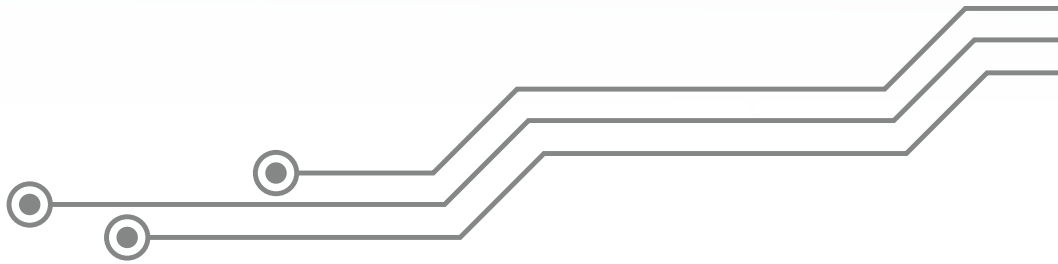
## Overview

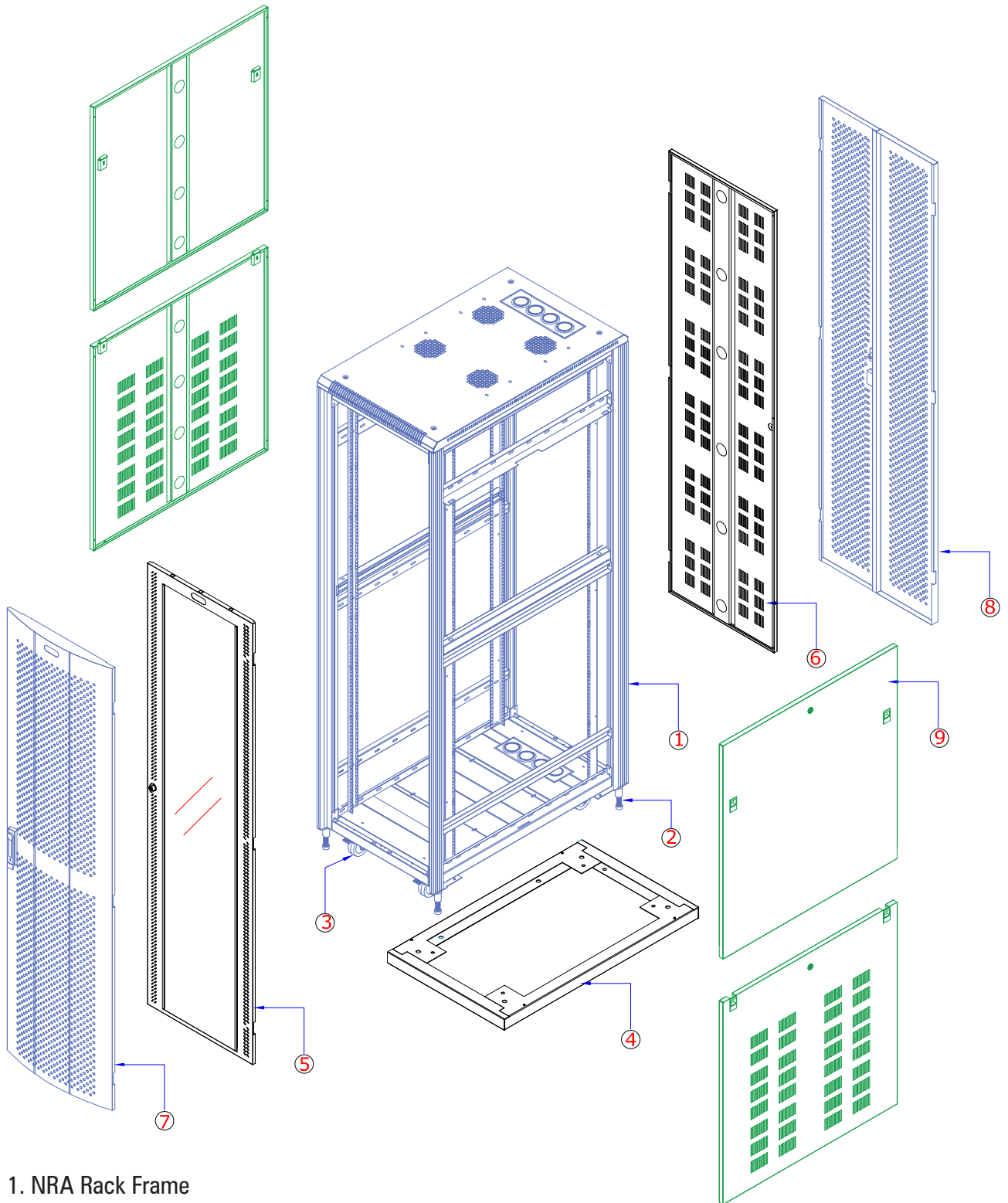
NRA Series, Rigid Racks for Servers, Networking, AV, Telecom & lab application. Racks manufactured out of aluminum profile, Formed steel frames & members, individually Powder coated and bolted with highest quality standards under stringent ISO 9001 | ISO 14001 | ISO 27001 | ISO 45001 Manufacturing & Quality management system.

Standard for Racks configuration will be bolted frame with 4 No. Pillars made of aluminium extruded profile Bolted to top and bottom ribbed/ reinforced frame additionally supported depth wise by 6 no depth rail 2 folded profile. Associated with vented top cover with fan mounting provision Front Glass or perforated Metal Door with lock & Key and Back Vented / perforated metal door with lock & key and partially vented or Plain side panels, 1200 deep rack will be configured with dual side panel. Free standing on floor with 4 No casters wheels with 2 Nos. with brakes and 2 Nos. without brakes & with Levelers OR plinth.

Available in 6RU~52RU Variants with 650, 800, 1000 & 1200 Deep configurations and 600 width configurations







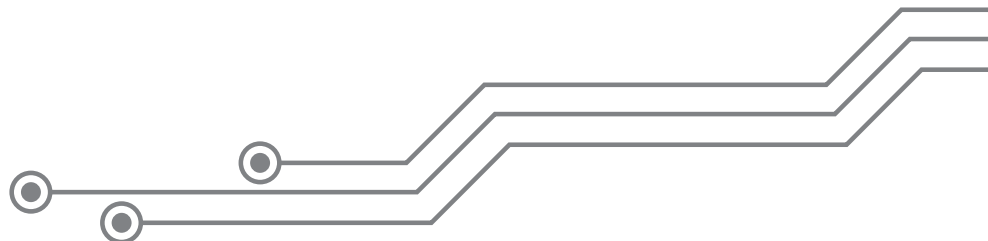
1. NRA Rack Frame
2. Levellers
3. Castors
4. Plinth
5. Glass Door
6. Metal Door
7. Perforated Door
8. Perforated Door Dual
9. Sidepanel Vented

## Features

- Conforms to DIN 41494 or Equivalent EIA / ISO / EN / CEA Standard
- Adjustable mounting depth
- 4 No Adjustable, 19" verticals with Punched 10 mm Square Hole and Universal 12.7mm-15.875mm-15.875mm alternating hole pattern offers greater mounting flexibility, maximizes usable mounting space
- Numbered U positions
- Universal 44.45MM Pitch Holes For DIN Standard Racks
- State-of-the-art manufacturing methods provide the best product quality and fastest delivery in the industry
- 100% assured compatibility with all equipments conforming to DIN 41494 (General industrial standard for equipments)
- Powder coated finish with Seven tank pretreatment process meeting ASTM standard
- Grounding & Bonding Options
- Fan module Mount Provision on top Cover

### Technical Data:

Basic Frame	Composite (Aluminium Section & Steel)
Construction	CKD Type
Top & Bottom Cover	Bolted to Frame with Cable entry exit cut outs
Front Door	Lockable Toughened Glass Door OR Lockable Perforated steel Door
Rear Door	Lockable Steel Door - Plain / Vented / Perforated
19" Mounting Angle	Formed Steel
Std. Equipment Mounting	DIN Std. 10mm Sq. Slots
Standard Finish	Powder coated
Standard Colour	Grey & Off White OR Black
Standard Mounting	Caster wheels (2 with Brake & 2 without Brake) OR Levelers OR Plinth
Rack Standard	Conforms to DIN 41494 or equivalent standard
Static Load	750Kg with casters. 1250Kg with Levelers / Plinth



Model Matrix & Dimensions										
NRA Series	H	h	W	w	w1	D	d	d1	Caster Type	Plinth Height(MM)
6U 600X650	411	6U	600	19"	451	650	550	445	TYPE-2	50/100
6U 600X800	411	6U	600	19"	451	800	700	535	TYPE-2	50/100
6U 600X1000	411	6U	600	19"	451	1000	900	725	TYPE-2	50/100
9U 600X650	544	9U	600	19"	451	650	550	445	TYPE-2	50/100
9U 600X800	544	9U	600	19"	451	800	700	535	TYPE-2	50/100
9U 600X1000	544	9U	600	19"	451	1000	900	725	TYPE-2	50/100
12U 600X650	677	12U	600	19"	451	650	550	445	TYPE-2	50/100
12U 600X800	677	12U	600	19"	451	800	700	535	TYPE-2	50/100
12U 600X1000	677	12U	600	19"	451	1000	900	725	TYPE-2	50/100
15U 600X650	810	15U	600	19"	451	650	550	445	TYPE-2	50/100
15U 600X800	810	15U	600	19"	451	800	700	535	TYPE-2	50/100
15U 600X1000	810	15U	600	19"	451	1000	900	725	TYPE-2	50/100
17U 600X650	899	17U	600	19"	451	650	550	445	TYPE-2	50/100
17U 600X800	899	17U	600	19"	451	800	700	535	TYPE-2	50/100
17U 600X1000	899	17U	600	19"	451	1000	900	725	TYPE-2	50/100
22U 600X650	1121	22U	600	19"	451	650	550	445	TYPE-2	50/100
22U 600X800	1121	22U	600	19"	451	800	700	535	TYPE-2	50/100
22U 600X1000	1121	22U	600	19"	451	1000	900	725	TYPE-2	50/100
22U 600X1200	1121	22U	600	19"	451	1200	1100	725	TYPE-2	50/100
27U 600X650	1343	27U	600	19"	451	650	550	445	TYPE-2	50/100
27U 600X800	1343	27U	600	19"	451	800	700	535	TYPE-2	50/100
27U 600X1000	1343	27U	600	19"	451	1000	900	725	TYPE-2	50/100
27U 600X1200	1343	27U	600	19"	451	1200	1100	725	TYPE-2	50/100
32U 600X650	1565	32U	600	19"	451	650	550	445	TYPE-2	50/100
32U 600X800	1565	32U	600	19"	451	800	700	535	TYPE-2	50/100
32U 600X1000	1565	32U	600	19"	451	1000	900	725	TYPE-2	50/100
32U 600X1200	1565	32U	600	19"	451	1200	1100	725	TYPE-2	50/100
34U 600X650	1654	34U	600	19"	451	650	550	445	TYPE-2	50/100
34U 600X800	1654	34U	600	19"	451	800	700	535	TYPE-2	50/100
34U 600X1000	1654	34U	600	19"	451	1000	900	725	TYPE-2	50/100
34U 600X1200	1654	34U	600	19"	451	1200	1100	725	TYPE-2	50/100
36U 600X650	1743	36U	600	19"	451	650	550	445	TYPE-2	50/100
36U 600X800	1743	36U	600	19"	451	800	700	535	TYPE-2	50/100
36U 600X1000	1743	36U	600	19"	451	1000	900	725	TYPE-2	50/100
36U 600X1200	1743	36U	600	19"	451	1200	1100	725	TYPE-2	50/100
38U 600X650	1832	38U	600	19"	451	650	550	445	TYPE-2	50/100
38U 600X800	1832	38U	600	19"	451	800	700	535	TYPE-2	50/100
38U 600X1000	1832	38U	600	19"	451	1000	900	725	TYPE-2	50/100
38U 600X1200	1832	38U	600	19"	451	1200	1100	725	TYPE-2	50/100
40U 600X650	1921	40U	600	19"	451	650	550	445	TYPE-2	50/100
40U 600X800	1921	40U	600	19"	451	800	700	535	TYPE-2	50/100
40U 600X1000	1921	40U	600	19"	451	1000	900	725	TYPE-2	50/100
40U 600X1200	1921	40U	600	19"	451	1200	1100	725	TYPE-2	50/100
42U 600X650	2010	42U	600	19"	451	650	550	445	TYPE-2	50/100

Model Matrix & Dimensions

NRA Series	H	h	W	w	w1	D	d	d1	Caster Type	Plinth Height(MM)
42U 600X800	2010	42U	600	19"	451	800	700	535	TYPE-2	50/100
42U 600X1000	2010	42U	600	19"	451	1000	900	725	TYPE-3	50/100
42U 600X1200	2010	42U	600	19"	451	1200	1100	725	TYPE-3	50/100
44U 600X650	2099	44U	600	19"	451	650	550	445	TYPE 3	50/100
44U 600X800	2099	44U	600	19"	451	800	700	535	TYPE 3	50/100
44U 600X1000	2099	44U	600	19"	451	1000	900	725	TYPE 3	50/100
44U 600X1200	2099	44U	600	19"	451	1200	1100	725	TYPE 3	50/100
45U 600X650	2143	45U	600	19"	451	650	550	445	TYPE-2	50/100
45U 600X800	2143	45U	600	19"	451	800	700	535	TYPE 3	50/100
45U 600X1000	2143	45U	600	19"	451	1000	900	725	TYPE 3	50/100
45U 600X1200	2143	45U	600	19"	451	1200	1100	725	TYPE 3	50/100
48U 600X650	2276	48U	600	19"	451	650	550	445	TYPE 3	50/100
48U 600X800	2276	48U	600	19"	451	800	700	535	TYPE 3	50/100
48U 600X1000	2276	48U	600	19"	451	1000	900	725	TYPE 3	50/100
48U 600X1200	2276	48U	600	19"	451	1200	1100	725	TYPE 3	50/100

Note :

1. Overall Height = Frame Height+ Plinth or Caster
2. It is recommended to distribute the Load along with U space in the Rack
3. Dimension are in MM

Abbreviations

Frame Height	H
Usable Height	h
Overall width	W
Usable width	w
Usable width Between Front MTG. Angles	w1
Overall Depth	D
Usable Depth	d
Usable Depth From Mounting Angle to Angle	d1

Description	Height (MM)
TYPE-2	85
TYPE-3	105

